



Excellence in Construction Awards

2020 PROJECT WINNERS



BE THE BEST... DELIVER EXCELLENCE

WANZEK

a **MasTec** company



**Thank you to our clients, partners and employees
who went above and beyond to build these
award winning projects!**

WANZEK.COM

Excellence in Construction Awards

TABLE OF CONTENTS

STEP Awards	3
Construction Company of the Year	4
Construction Woman of the Year	4
2020 Award Winners	
Mega Projects	5-6
Industrial Construction	7-9
Public Works/Environmental	10
Commercial Construction	11
Institutional Construction	12-14
Healthcare Construction	16-18
Renovation	20
Historical Restoration	21
Electrical Commercial	22-23
Electrical Industrial	24
Residential Multi-Family	26-29
Other Specialty Construction	39
Specialty Contracting - Interiors	30-31
Specialty Contracting - Exteriors	33

ABC MN/MNOSHA Partnership

- | | |
|--|---------------------------------------|
| • A.B. Systems | • Larson Building, Inc. |
| • Bauer Design Build, LLC | • Lyon Contracting, Inc. |
| • Berd Electric, LLC | • Marcus Construction |
| • Breitbach Construction | • MinDak Commercial Construction |
| • Cedar Lake Electric, Inc. | • Nor-Son Construction |
| • Dale Gruber Construction, Inc. | • Rice Companies |
| • Electrical Production Services, Inc. | • Schwickert's Tecta America LLC |
| • Fagen, Inc. | • Security Fire Sprinkler, LLC |
| • Greystone Construction Company | • Shingobee |
| • Horizon Roofing, Inc. | • Stotko Speedling Construction, Inc. |
| • J-Berd Mechanical, Inc. | • Willmar Electric Service Corp. |
| • Laketown Electric | |



Associated Builders and Contractors, Inc. Minnesota/North Dakota Chapter

Minnesota Chapter
10193 Crosstown Circle,
Eden Prairie, MN 55344
Phone: (952) 941-8693
Fax: (952) 941-8698
www.mnabc.com

North Dakota Council
4511 15th Avenue
Fargo, ND 58102
Phone: (701) 238-8853
www.ndabc.com

STEP Awards - For Contractors Who Promote Safety

ABC's Safety Training and Evaluation Process (STEP) recognizes the efforts of ABC members that strive to achieve effective safety practices at their firms and provides contractors with a tool to objectively evaluate their safety programs, policies, procedures and training. Using a template provided by ABC National, contractors evaluate their programs and receive certificates for qualifying at the Bronze, Silver, Gold, Platinum or Diamond levels. Contractors can use the one-year STEP certification as a business marketing tool and to improve safety at their firms.

2020 MN/ND ABC STEP Winners

DIAMOND LEVEL

- Marcus Construction
- Knobelsdorff Electric, Inc.
- STARCON International
- T. E. Ibberson Company
- The Weitz Company

Platinum Level

- Bergstrom Electric, Inc.
- CBS Construction Services, Inc.
- Dale Gruber Construction, Inc.
- Greystone Construction Company
- Laketown Electric Corporation & Engineers
- Olaf Anderson Construction, Inc.
- Wanzek Construction, Inc.
- Wieser Brothers General Contractor, Inc.

GOLD LEVEL

- Charps, LLC
- Custom Aire, Inc.
- Gartner Refrigeration Co.
- K H C Construction Inc.
- Larson Building, Inc.
- Miller Insulation Co., Inc.
- Mindak Commercial Construction
- Oxentenko, Inc.

GOLD LEVEL cont.

- Rice Companies
- R.J. Zavoral & Sons, Inc.
- Schwickert's Tecta America LLC
- Shingobee
- Willmar Electric Service

Silver Level

- ABHE & Svoboda Inc.
- Bauer Design Build, LLC
- Breitbach Construction
- Cedar Lake Electric, Inc.
- Construction Engineers, Inc.
- East Side Glass Co.
- Fagen, Inc.
- Lunseth Plumbing & Heating Co., Inc.
- Lyon Contracting, Inc.
- Stotko Speedling Construction, Inc.
- Wilcon Construction Inc.

BRONZE LEVEL

- A.B. Systems
- Berd Electric, LLC
- B.J. Baas Builders, Inc.
- Brennan Construction of MN, Inc.
- Comstock Construction
- Design Electric
- Electrical Production Services, Inc.
- General Sprinkler Corporation
- Horizon Roofing, Inc.
- Hy-Tec Construction
- Integrated Building Solutions
- J-Berd Mechanical, Inc.
- John T. Jones Construction Co.
- MCI Paint & Drywall
- Nor-Son, Inc.
- Schwab, LLC
- SCR
- Security Fire Sprinkler, LLC
- Stevens Construction Corp.
- Superior Mechanical, Inc.
- Sussner Construction
- Vos Construction Inc.
- WEB Construction Co., Inc.
- Wolf Construction Services, Inc.

2020 ABC Construction Company Of The Year

The Weitz Company

The Weitz Company offers construction expertise in three core product lines – Commercial, Industrial and International – and has built projects in all 50 states. We are committed to superior quality, value and complete customer satisfaction by developing collaborative relationships with clients, designers, partners, subcontractors and suppliers.

Our job is first, and foremost, about our customers. Keeping our customers at the forefront helps us determine what project success really looks like, long before the first piece of construction equipment arrives on the jobsite. This goes beyond cost, schedule and quality. It's about relationships, innovation, efficiency, empowerment and learning. We work with our clients to uncover their expectations to reveal other pressures, challenges and concerns that face them in the process of building their project. Then, we respond by

developing solutions and taking steps to address these needs, help achieve their goals and complete projects efficiently and safely.

Weitz is proud to be working with the Tyson Foods team members, as we constructed the first of the next generation of feed mills. Weitz has done considerable work for Tyson Foods Inc. in the past, and due to our excellent quality of work and attention to detail, we continue to be one of their contractors of choice.

For the past five years, Weitz Minneapolis has spent a day volunteering for a local organization called Household & Outside Maintenance for the Elderly (HOME). Weitz provided yard service and miscellaneous chores for the elderly in nearby communities.



Keeping our customers at the forefront helps us determine what project success really looks like, long before the first piece of construction equipment arrives on the jobsite.

2020 ABC Construction Woman Of The Year

Diane Haugen, Certified Wood Products



This Award recognizes the outstanding efforts of a woman in the construction industry. It encompasses accomplishments, leadership, contributions to the community and promotion of the merit shop. Diane Haugen is CEO and majority owner of Certified Wood Products in Maple Lake, MN. Certified Wood Products is a national wholesale supplier of forest products that are certified by the Forest Stewardship Council®

(FSC®). This means the growers and harvesters of FSC timber must protect animals and water quality, ban highly hazardous chemicals, minimize clear-cuts, protect rare old growth forests, protect the loss of natural forest cover, forbid illegal logging and protect the rights of people and local communities.

Diane's focus on sustainability and stewardship of forests is exemplified by supplying FSC-certified wood. As you might imagine, it's easier and cheaper to skip that certification, but every year, Certified must pass a demanding certification audit in order to continue supplying FSC-certified wood.

Orders are used for building structures including commercial, institutional, educational, medical, recreational and governmental use. FSC-certified forest products help support organizations' initiatives for stewardship, environmental impact, social responsibility and climate change mitigation.

Diane understands the importance of quality and integrity. She and a partner started Certified 20 years ago with an eye on their values as well as on making a living. That meant seeking out responsible users and connecting them with responsible producers.

Annually, Certified Wood Products contributes 10% of all earnings to organizations that are making a positive impact. Certified supports Feed My Starving Children, Samaritan's Purse, World Vision, Joni and Friends, the Red Cross, the Animal Humane Society, and the Salvation Army, among other community organizations.

Diane appreciates the work ABC does to help members develop people, win work and advocate on our behalf for free enterprise in the construction industry. Haugen especially appreciates the patriotism exemplified by ABC. Her company takes advantage of ABC's training programs, structured networking events and has sponsored many events and meetings.

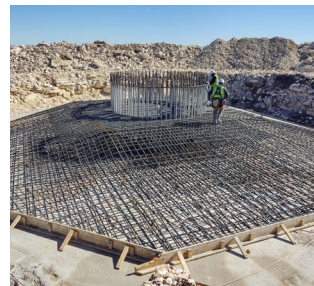
Diane understands the importance of quality and integrity. She and a partner started Certified 20 years ago with an eye on their values as well as on making a living.

★ MEGA PROJECTS

Project Budget:	More than \$100 Million
Company:	Fagen, Inc.
Award:	HONORABLE MENTION
Project:	Aviator Wind

Fagen, Inc. ("Fagen") was the BOP contractor for the Aviator Wind Farm project in Coke County, Texas, near the town of Robert Lee. This 525 MW wind powered electricity generation facility is currently the largest single-phase, single-site wind farm ever built in America. It consists of one hundred thirty-six (136) model GE-116, 2.72 MW Wind Turbine Generators (WTGs), all at 90 meter hub heights, and fifty-five (55) model GE-127, 2.82 MW WTGs, all at 89 meter hub heights. This project sits on 51,977 acres and spans approximately 18 miles from east to west and nine miles from north to south.

Fagen crews worked 289,674 manhours with 1 lost time accident. Fagen was responsible for the complete engineering, procurement and construction of the balance of plant, including all associated equipment, systems, and structures. This included turbine erection, turbine foundations, access roads, crane pads, drainage, two collection substations, transmission line, electrical collection systems, grounding systems and fiber-optic.



LUNSETH

Plumbing & Heating Co.
Mechanical Contractor & Designers
Grand Forks Fargo



Industrial • Commercial • Military • Government • Residential
Process Piping • Geothermal • Utilities • ASME & Code Repair
Professional Engineering • Design/Build
Prefabrication Shop • Industrial Controls & Automation
ND# 9307 SD# 1608C MN# 061165PM

EAST SIDE GLASS

Glass solutions guaranteed!

RESIDENTIAL GLASS SERVICE

- ▶ Residential Insulated Glass
- ▶ Window & Screen Repairs
- ▶ Glass Shower Doors
- ▶ Plexi Glass
- ▶ Foggy Window Repair
- ▶ Decorative Cabinetry Glass
- ▶ Storm Windows

COMMERCIAL GLASS EXPERTS

- ▶ Store Front Design & Remodeling
- ▶ Window Repair & Replacement
- ▶ Aluminum Doors & Entrances

CALL FOR A FREE QUOTE: 320-251-1900
www.eastsideglass-mn.com
 305 Franklin Ave. NE, St. Cloud, MN 56304

★ MEGA PROJECTS

Project Budget:	More than \$100 Million
Company:	Wanzek Construction, Inc.
Award:	EAGLE
Project:	Diamond Spring Wind Farm

The Diamond Spring Wind Farm was completed two months ahead of schedule, with 300,000 + labor hours worked, zero reworks, and resulted in a satisfied client amid a global pandemic. Wanzek is a company that works every day to be the best, and executes with that mindset. Wanzek is a construction company that prides themselves on not holding back, but pushing forward in the face of adversity with COVID-19. Throughout the duration of this project, the team created innovative solutions to overcome obstacles and challenges. Developed by APEX Clean Energy and located just outside of Oklahoma in Johnson and Pontotoc counties, this land was identified as a prime location for wind development. In 2019, APEX Clean Energy worked with landowners and ALLETE Clean Energy to make this project a reality. This wind farm boasts 112 turbines and spans across 24,000 acres of pastureland. The Diamond Spring Wind Farm will deliver 303 MW of electricity, which is enough to supply energy to 114,000 homes.

With a portfolio in excess of 11,000 MW of successfully completed wind energy projects across the United States, Wanzek continues to establish themselves as an industry leader. Wanzek's flexibility when dealing with project specific challenges and applying lessons learned were never more prevalent than on the Diamond Spring Project. Throughout every stage of project development and implementation, Wanzek strived to find methods to increase productivity, improving outcomes while reducing costs and time to completion. Applying tactics and strategies from previous projects allowed Wanzek to capitalize on efficiencies for standard operations and aided in adapting to numerous new obstacles that presented themselves on this project.



★ INDUSTRIAL CONSTRUCTION

Project Budget: Over \$5 Million

Company: Fagen, Inc.

Award: HONORABLE MENTION

Project: Monolith MEPI

Fagen, Inc. was the EPC contractor for a state-of-the-art carbon black & hydrogen facility in Hallam, Nebraska. The facility was built for Monolith Materials LLC, whose proprietary plasma process for carbon black production is more environmentally friendly than other means of carbon black production. The facility will initially produce 14,000 tons of carbon black per year, with a future goal of 220,000 ton per year. Carbon black is used to enhance many products, including rubber products, plastics, coatings and adhesives, toners and inks, and batteries. The hydrogen byproduct will be transported via pipeline to Nebraska Public Power District's (NPPD) Sheldon Station, where it will be used to create clean, affordable energy for the citizens of Nebraska. The facility is located just outside of Hallam and sits on approximately 10 acres. Fagen was originally responsible for mechanical, electrical, pipe, instrumentation and structural scopes, and took over concrete early on in the project.



NORTH RISK PARTNERS®

FACE RISK HEAD ON

**INSURANCE SOLUTIONS
FOR PEOPLE & BUSINESS**

Schedule a Complimentary Coverage Review

622 Roosevelt Rd., Ste. 240, St. Cloud, MN 56301

800.247.7016 | NORTHRISKPARTNERS.COM



★ INDUSTRIAL CONSTRUCTION

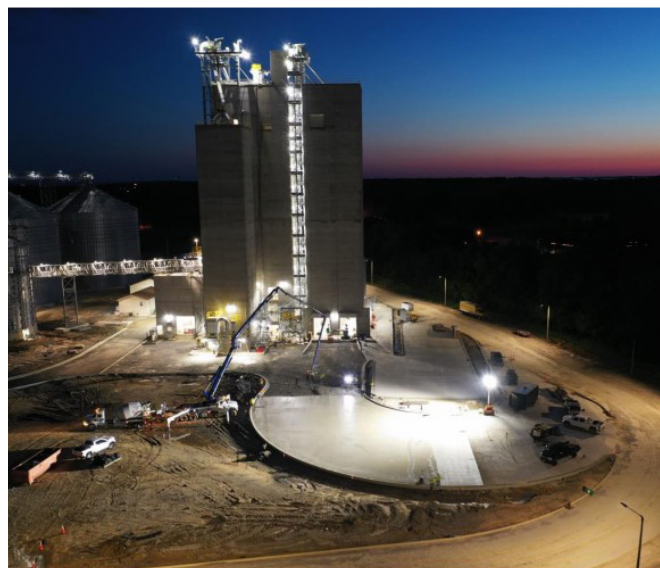
Project Budget:	Over \$5 Million
Company:	The Weitz Company
Award:	EAGLE
Project:	Poultry Feed Mill Facility

Tyson contracted with The Weitz Company (Weitz) to design-build a “state-of-the-art” feed processing facility located immediately adjacent to the existing newly purchased grain storage facility in Humboldt, Tennessee. In addition to utilizing the grain storage, Tyson was also able to use the existing truck and rail receiving systems to receive locally grown grain and receive the additional required softstock ingredients to formulate and manufacture nutritious broiler feed. A broiler is any chicken that is bred and raised specifically for meat production.

The primary reasons that Tyson selected Weitz to design and build the feed mill were: Weitz’ construction safety record, a Weitz process design concept that is more cost effective to manufacture feed as compared to other designs, and the quality of construction with attention to every detail, which is a Weitz trademark.

The feed mill was created as part of “next generation” of design innovation. Features of this feed mill are unique to the Weitz/Tyson alliance. Low manufacturing cost per ton is important to incorporate into the design of the feed mill, but so is safety features, maintenance accessibility, automation, and minimal bulk material handling equipment.

The feed mill has a process design of 14,000 tons per week poultry feed manufacturing capacity. The project included the design and installation of the process and material handling equipment for grain storage, grinding, batching, mixing, pelleting, cooling, dust control and bulk loadout of finished feed. The state-of-the-art feed mill was completed in 20 months.



★ INDUSTRIAL CONSTRUCTION

Project Budget:	Over \$5 Million
Company:	Nor-Son Construction
Award:	EAGLE
Project:	Barrett Pet Food Innovations

Barrett Petfood Innovations (BPI) is a family-owned and operated pet food extrusion company. Growing at a rapid pace, the company produces over 150 different types of pet food from dog, cat and bird food to more exotic items such as turtle, fish and primate food. The final products are distributed locally as well as exported around the world. The facility south of Brainerd had served the company well over the years, but ever-growing demands placed the need for a much larger facility with improved, state-of-the-art equipment.

The owners retained Nor-Son Construction for the design and construction of a new 160,000 square foot facility in Little Falls to support manufacturing, packaging and distribution of the Brainerd facility. Barrett was already taking orders for the production the new plant would add. A fast track design/build delivery was established to meet the owner demands.

Design decisions had to be made quickly and efficiently to eliminate any changes that could potentially affect the budget. Large custom designed and engineered equipment specifications were unknown, yet steel had to be ordered for the building. Final decisions on the size of the building were firmed up with the owners, knowing the entire team had to “live” with the decision once the metal building arrived. With many moving equipment targets, Nor-Son was continuously working with the structural engineer to ensure the building was sized properly.

An unusually wet fall created poor working conditions throughout winter as the ground became a sheet of ice. Guided by its mission to build long-term client relationships, Nor-Son Construction met and exceeded the challenges presented during the Barrett Petfood Innovations project delivering the project on time, within budget and with a perfect safety record.



Project Budget:	Over \$5 Million
Company:	John T. Jones Construction Co.
Award:	EAGLE & PRODUCTIVITY AWARD
Project:	Yankton, SD Water Purification Facility

The City of Yankton, SD contracted with John T. Jones Construction Co. to build a \$34.8 million reverse osmosis water treatment addition to their existing water purification facility. It added an additional capacity of 6.6 million gallons per day to meet the growing city's consumption demands. The new processes consisted of aeration, detention, plate settlement, gravity filtration, RO filtration, and chemical treatment resulting in some of the purest drinking water in the region.

Situated along the Missouri River, the addition is over 82,000 SF of treatment and office space and required over 9,000 CY of CIP structural concrete. We self-performed nearly 60% of the work on the project.

Collaborating closely with the city and design team, we were able to overcome numerous hurdles including keeping the existing treatment facility in operation during the entire duration of the project. Construction began in the summer of 2017 and the facility was in operation by December of 2019.

PRODUCTIVITY AWARD

In order for the new reverse osmosis treatment facility to discharge any reject water, two discharge lines needed to be installed approximately 100 feet out into the Missouri River. The project was designed to use a temporary cofferdam system to retain the river water and traditional trenching to install the two ductile iron pipelines. Then gabion baskets would be used as ballast to hold the two diffuser lines in place. This method required substantial man-hours and would have introduced unnecessary risk and safety hazards.

Through planning and collaboration with the design team, J TJ was able to come up with an acceptable installation method which substantially improved install time and eliminated many of the safety concerns and risk factors. This was all the more important as the Army Corps of Engineers was releasing high flows into the river during this period.

We assembled the diffuser assemblies on shore and flew them out into the river with a crane, utilizing dive teams to assemble the diffusers and piping underwater. Then we craned in precast block mats as ballast to hold the diffusers and piping in place without ever having to send an employee into the riverbed.



★ COMMERCIAL CONSTRUCTION

Project Budget:	Over \$5 Million
Company:	Nor-Son Construction
Award:	EAGLE
Project:	Grand View Lodge Hotel & Recreation

Grand View Lodge has provided vacation services for over 100 years in the Brainerd Lakes Area. Located on the north shores of Gull Lake, the resort had expanded their services over the years creating the need for more lodging space and a more modern pool and fitness center with amenities desired by their high-end clientele.

The result was a 60-room boutique hotel called North and a neighboring pool & fitness facility called North Park. Working within a fast track delivery with only the shell package of the hotel completed, design details were finalized during construction. Many demanding pieces had to be coordinated to fit into place with long lead time on materials and obtaining qualified personnel during a booming construction season in the Brainerd Lakes Area.

Working over the winter is the nature of the business in this highly popular recreational area, but this one was extremely wet and cold, potentially delaying the opening of the North Park Recreational Center. An unusual cold snap caused by a polar vortex occurred the day the pool plastering was scheduled. To keep the project moving, the team sheltered and heated the entire semi used for mixing and pumping plaster to allow the work to continue.

The Nor-Son Design/Build team successfully completed the two new facilities on time, on budget and with a perfect safety record.



★ INSTITUTIONAL CONSTRUCTION

Project Budget:	Over \$5 Million
Company:	Construction Engineers
Award:	PYRAMID
Project:	Clay County Government Campus

This Clay County Governmental Campus project in Moorhead, MN, spanned four years, and included the construction of two buildings, the demolition of two buildings, plus the renovation and building of three new additions. Adding to the complexity during this time, inmates were housed on campus during the entire construction timeline. Another challenge the team faced was that the new Correctional Center was built over an existing inmate transfer underground tunnel, which remained intact and part of the final design. Even with all these challenges, the project was completed under budget and on-schedule.

From the beginning, the Clay County Correctional staff wanted the new Correctional Center to function differently as the staff focused on addressing the mental health of future inmates. Incorporated in the design and construction of this building was a state-of-the-art, 18-bed behavioral facility which provided softer furnishings and individual cells which were clustered in groups of four with a lounge and programming space.

The Law Enforcement Center is a unique partnership where Clay County and the City of Moorhead, MN share the facility.



★ INSTITUTIONAL CONSTRUCTION

Project Budget:	Over \$5 Million
Company:	The Joseph Company
Award:	PYRAMID
Project:	Austin High School Music Addition – MacPhail Center for Music Renovations

A joint venture between the MacPhail Center for Music and Austin Public School District contracted The Joseph Company in early 2019 to build a state-of-the-art music training and performance facility for the residents of Austin MN and surrounding communities. This \$8.4 million dollar project was an extreme renovation of an existing one-story structure with basement built in 1952 including an addition of a second floor. Unique design features requiring special construction attention include a high-design multi-surfaced / angled exterior metal panel wall system that wraps the second-floor addition. Also, four floor levels connect into a 4-stop elevator within the existing structure and addition. This high-profile community project was praised by the project architect stating "Joseph was agile / flexible in resolving issues and in generating creative approaches to managing the construction process. They understood the importance of this project for each user group and for the City of Austin." The project was completed ahead of schedule with over 69,000 hours worked.



★ INSTITUTIONAL CONSTRUCTION

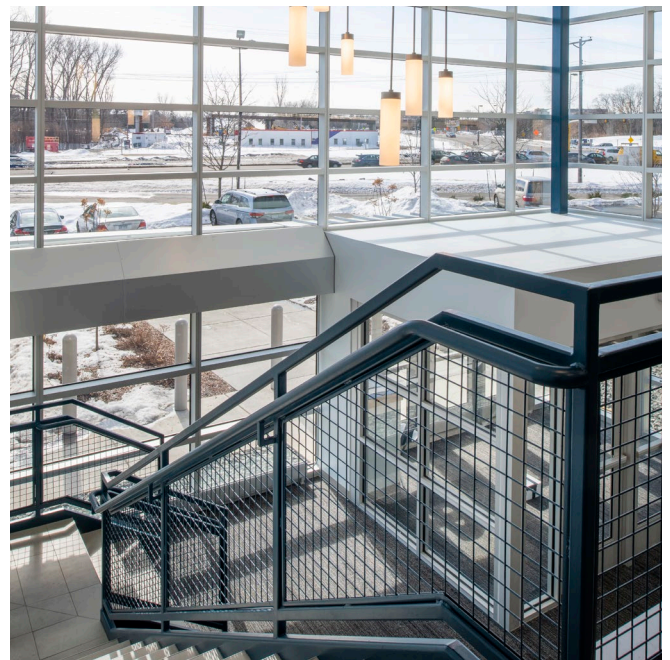
Project Budget:	Over \$5 Million
Company:	Nor-Son Construction
Award:	EAGLE
Project:	Yeshiva of Minneapolis School Addition

Yeshiva of Minneapolis, a nationally known Jewish high school for boys, provides students the opportunity to obtain a faith centered education and a place that they can live, play and worship in a safe community environment. Due to its popularity, Yeshiva needed to greatly increase the size of their St. Louis Park facility to allow for more students to attend while living on campus. The new addition, which nearly doubled the size of the school, includes a full-size gymnasium with clerestory windows, new classrooms, new restrooms and shower area, lounge and activity spaces on each floor, new offices for the staff, and 26 additional dormitory rooms.

Located in a residential area, it was important the addition and remodeling did not have an adverse effect on the health, safety and welfare of the surrounding residents. Great efforts were made to limit the visual impact of the project on the local neighborhood by tucking the addition within a hill in an innovative way.

Starting a construction project in December is never ideal, but once approvals were made, it was necessary to hit the ground running to meet the start of the 2019 school year. What should have been a 14-month construction schedule was reduced to just over 9 months. Strategies were put in place to build fast by maximizing the opportunities to prebuild different building components off site and installing completed items, just in time.

Nor-Son Construction met and exceeded multiple challenges presented during the Yeshiva of Minneapolis School Expansion. Nor-Son maintained sensitivity to the residential community and students of Yeshiva by maintaining careful and considerate construction management practices. And during this process, the team discovered a new appreciation and understanding of the Jewish culture.





Commercial, Residential, Finish Carpentry & Retail Installations

Twin Cities Trimming is a high end interior trim, millwork, and woodwork installation company. We specialize in staircases, railings, mantles and other challenging woodwork projects.

When precision counts, don't trust your trim work to just anyone, turn to the trusted trim experts.

SERVICES WE PROVIDE:

- Interior Door & Trim Installation
- Fixture & Cabinet Installation
- Stairs & Railings
- Fireplaces & Mantels
- Coffered Ceilings
- Accent Wall Molding
- Barn Interiors
- Custom Gun Rooms
- Custom Bars



"Dan and his team exceeded our high expectations."

- Jason H., client



Recipient of 5 Best of Houzz Service Awards!

www.houzz.com/pro/twincitiestrimming



"Dan's crew are some of the finest trim carpenters in the Twin Cities."

- Alan S., client

Twin Cities Trimming LLC
Danny Aschemann

(612) 296-9992

twincitiestrimming@gmail.com



SEE EXAMPLES OF OUR CRAFTSMANSHIP AT WWW.TWINCITIESTRIMMING.COM

★ HEALTHCARE CONSTRUCTION

Project Budget:	Over \$5 Million
Company:	Hy-Tec Construction of Brainerd, Inc.
Award:	PYRAMID
Project:	Mille Lacs Band of Ojibwe District 1 Health Clinic

The Mille Lacs Band of Ojibwe District 1 Health Clinic was built to create a “one-stop shop” for the members of the Mille Lacs Band community. Lacking accessible healthcare services within close proximity to the community members, the District 1 Health Clinic was built to provide a multi-faceted health system close to home. The 79,200 square foot facility provides full health clinic services including general practice, dental, optometry, pharmacy, radiology & imaging, physical therapy, and behavioral health services, all under one roof. The seamless connection of these critical health services allows users to schedule multiple appointments in one trip.



***Congratulations
Hy-Tec Construction on
your award! We were
honored to assist with
this project.***

ROY C., INC.



11010 Lamont Ave. NE
Hanover, MN 55341
www.roycinc.com

The 79,200 square foot facility provides full health clinic services including general practice, dental, optometry, pharmacy, radiology & imaging, physical therapy, and behavioral health services, all under one roof.

**Guidance + expertise
to support your
business growth**



Forecasting | Improve Cash Flow | Accounting | Tax | Advisory



612.359.9630

www.dsb-cpa.com/expertise/construction/

**CONGRATULATIONS TO HY-TEC CONSTRUCTION
ON THEIR AWARD WINNING PROJECT!**

FLYNN WAS HONORED TO HELP YOU ACHIEVE SUCCESS ON THIS PROJECT.

**COMMERCIAL ROOFING
ARCHITECTURAL METAL
24/7 EMERGENCY SERVICE
PREVENTIVE MAINTENANCE**



**35 OFFICES ACROSS NORTH AMERICA
INCLUDING MINNEAPOLIS**

763-559-0222

WWW.FLYNNCOMPANIES.COM

IMAGE PROVIDED BY SEVEN GENERATIONS ARCHITECTURE AND ENGINEERING

★ HEALTHCARE CONSTRUCTION

Project Budget:	Over \$5 Million
Company:	Lyon Contracting, Inc.
Award:	EAGLE
Project:	Urbana Place Senior Living

Urbana Place Senior Living is located on property that was formerly an agricultural site with a few dilapidated outbuildings. As part of the Owner's development agreement with the city, Lyon Contracting was contracted to clear the site and build a street extension of 94th Avenue North including the related utility infrastructure that wrapped around the site along with the site for a new 207-unit market rate apartment building that shares a parking lot on the east side of the building.

The senior living facility is a 105-unit, Y shaped, building consisting of 77 assisted living units and 28 secured memory care units. Under a portion of the building there is a 24,000 SF concrete and precast parking garage with 52 parking stalls.

The facility is equipped with a roof mounted solar PV system supplied and installed by Energy Concepts, Inc. (ECI) ECI is a NABCEP (North American Board of Certified Energy Practitioners) certified installer who has been recognized in the top 500 in the US for 5 years running. We utilized a lightweight aluminum and galvanized non-penetrating racking system held in place with concrete ballasts that did not require additional structural requirements or modifications to the roofs truss system. Other than the addition of a slip layer of EPDM below the racking system, to satisfy roofing manufacturer's roof guarantee, no significant modification to the building was required.



**Congratulations
Lyon Contracting
on your
award-winning
projects –
Urbana Place
Senior Living and
Lake Jonathan Flats
Apartments!**



sf sprinkler.com



j-berd.com



berdelectric.com

1 Industrial Blvd., Sauk Rapids, MN 56379 • (320) 656-0847

ABC creates invaluable opportunities for members to

CONNECT

ABC is dedicated to helping our members—self-made men and women—build and sustain strong business relationships. The association cultivates members who are job creators, drawn to ABC for the opportunity to connect.

Count on ABC to spark the best connections.

ABC—Helping members win work and deliver work safely, ethically and profitably for the betterment of the communities in which they work.

TOUGH. TRUSTED. CONNECTED.

Visit mnabc.com or ndabc.com to learn more.



Congratulations Lyon Contracting

We appreciate being able to assist with your award-winning Lake Jonathan Flats and Urbana Senior Living projects!

INNOVATED

SERVICES LLC

CONSTRUCTION SERVICES • LIGHT COMMERCIAL SPECIALISTS

Innovated Services LLC
8220 West 125th Street, Savage, MN 55378
Office: 952-882-0002 • Fax: 952-882-0003

www.innovatedservices.net

★ RENOVATION

Project Budget:	\$500-\$1 Million
Company:	Marcus Construction
Award:	PYRAMID
Project:	YMCA Early Learning Center

A child care survey of Kandiyohi County discovered that over 700 families in the county had an urgent need for child care, and of those, 250 children were listed in the New London – Spicer communities. The Kandiyohi YMCA saw and heard firsthand the extreme need for additional daycares, and they stepped up to help make a dent in that shortage.

The YMCA Early Learning Center is located in a strip mall space that had at one time housed a pharmacy and medical clinic. The space was replaced with the daycare center that accommodates 90 children from six weeks of age through pre-kindergarten. Marcus also added both an indoor and outdoor playground.

As a design build project, the challenge was putting the combination of child care code requirements, a goal of re-using as many existing features as possible, and the limited amount of square feet together in the usable mall space.

Child care code requirements were the leading factor in many of the design decisions. Some of the requirements included; a fire suppression system, the number of square feet per child in each classroom, the number of restrooms and where they need to be located, a kitchenette in the infant room with space for both a dirty and clean sink, and the need for laundry onsite. The daycare does cater in lunches, but because they prepare breakfast and snacks for the children, a commercial kitchen was required.

In an effort to help maintain budget for the YMCA, our design team salvaged and repurposed as much space as possible from the previous tenants.

To see a four-month renovation of mall space move from vacant to vibrant with the sounds of children filling it was pretty magical. Marcus Construction worked punctually and professionally to complete an exceptional daycare for the YMCA Early Learning Center – successfully having it ready to open by their goal date and within their budget.



★ HISTORICAL RESTORATION

Project Budget:	\$1-5 Million
Company:	Building Restoration Corporation
Awards:	EAGLE & INNOVATION AWARD
Project:	Bowman Hall Restoration Project

A building that exemplifies what it means to be historic, Bowman Hall is perhaps best known for its 165-foot tall bell tower that rises up over downtown Menomonie, WI from its place in the heart of the UW-Stout campus. The building was constructed in 1898 and is the University's second oldest building. It was also listed in the National Register of Historic Places in 1986. Many years of inappropriate masonry repairs left this building in need of a major restoration. BRC was selected for the project in late 2018 and completed the job in early 2020.

Our skilled masons replaced approximately 20,000 custom, hand molded face brick. Included in the brick replacement were 21 ornate brick shapes that had to be perfectly replicated to match the original brick. Our crew repointed nearly 30,000 square feet of wall area using period correct historic mortars, including lime putty. They also replaced or repaired nearly 1,000 cubic feet of brownstone on the body of the building and the bell tower. Other masonry restoration tasks included crack injection repair, redressing brownstone, sealant replacement and selective masonry cleaning.

Our sheet metal team took every aspect of the copper tower roof and weathervane assembly and dissected, analyzed, redesigned, and upgraded it from the original. They also managed to salvage and repair most of the original copper ornamental components from the weathervane that were then reinstalled as part of the final assembly. This wasn't just another restoration project for us, this was an opportunity to put our name on something special and to make a historic and majestic building that had been suffering and in need of repairs, whole once again.

INNOVATION AWARD FOR STRUCTURE WITH BEAMS AND SWING STAGE SUPPORT

When we bid this project, we had a very specific access plan in mind for the work required on the 165-foot-tall bell tower. The plan was to use a combination of scaffolding and lifts for the tower scope; however, we could not move forward with that plan due to unforeseen structural limitations of the tower masonry and the adjoining roof; an alternative method was needed. Our team conceived a plan that included suspending steel beams off of the belfry level steel structure, off of which we would hang swing stages to access the tower elevations. We also devised a way to set deck platforms on top of the beams that would allow our sheet metal crew to perform their work on the bell tower roof above. Our crews flawlessly assembled our unique access plan and were able to move forward with the bell tower masonry and sheet metal repairs with safe and comfortable access to the tower roof and masonry elevations.



★ ELECTRICAL COMMERCIAL

Project Budget:	\$500,000–\$1 Million
Company:	Willmar Electric Service, Corp.
Award:	EAGLE
Project:	Elgin Schools

The Elgin School District passed a \$36.9 million bond for upgrades to its middle school and high school. Willmar Electric Service was awarded the electrical installation of the new 29,000 square foot Performing Arts Center, as well as safe room additions to both the middle and high school. The safe room additions were a part of a larger FEMA initiative to provide school districts with funds to ensure the safety of students and faculty during severe weather such as a tornado.

The Performing Arts Center space included a lobby, an auditorium with a stage, dressing rooms, bathrooms, a control room, and the capacity to seat 1350 people. To meet the requirements of the project, Willmar Electric Service used 21 different types of lighting fixtures, with one being a 32 foot x 13 foot specially made Treble Clef for the lobby.

Willmar Electric Service was able to make continue adjustments to meet the customer's needs, used thinking outside-of-the-box thinking when hanging "sky" high light fixtures, and worked around in-school sessions to help provide a quality product to Elgin Schools. This in turn helped Elgin Schools to strive toward their goal – "to prepare students for the future, while providing a safe learning environment in which our students can succeed."

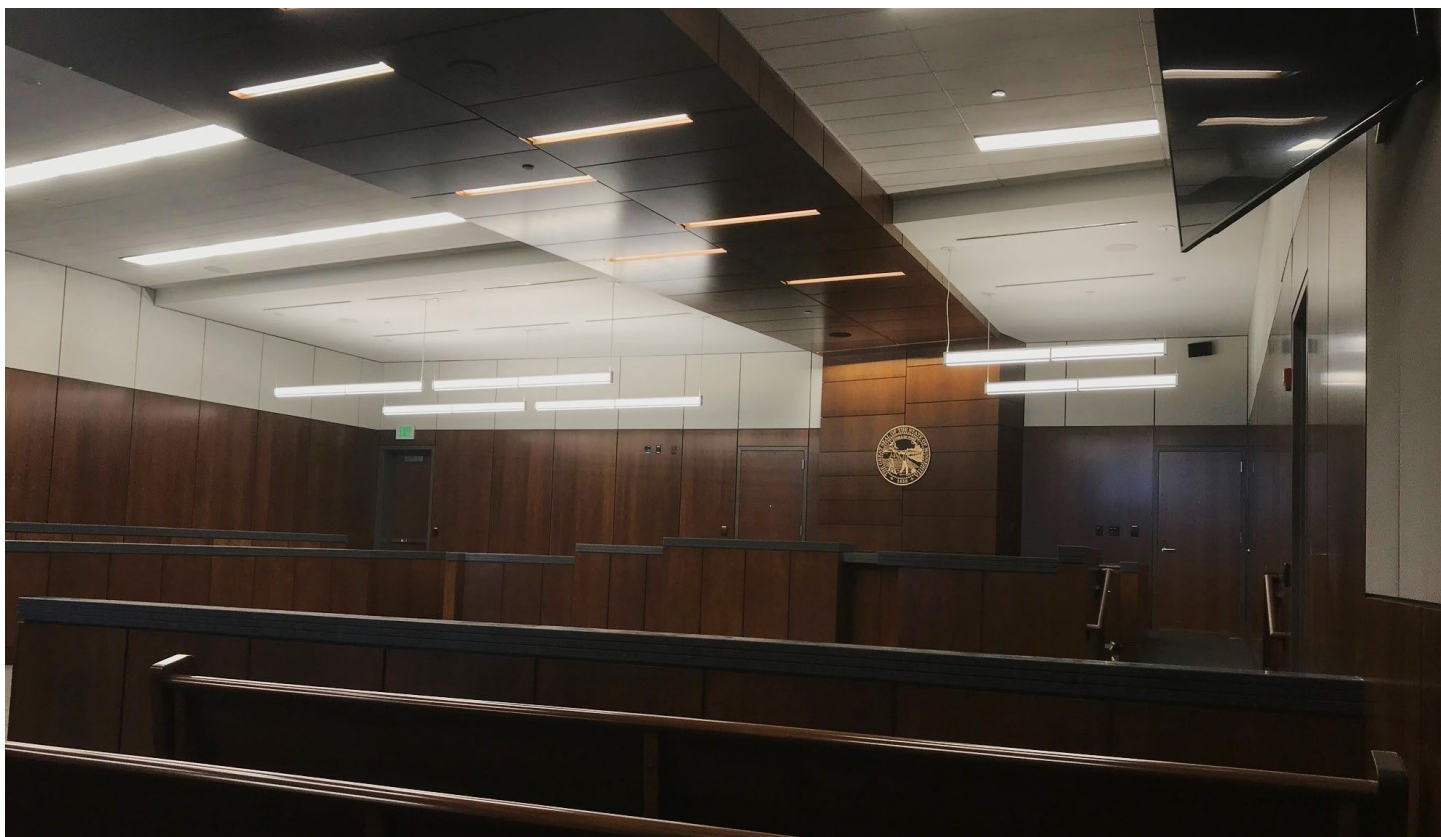
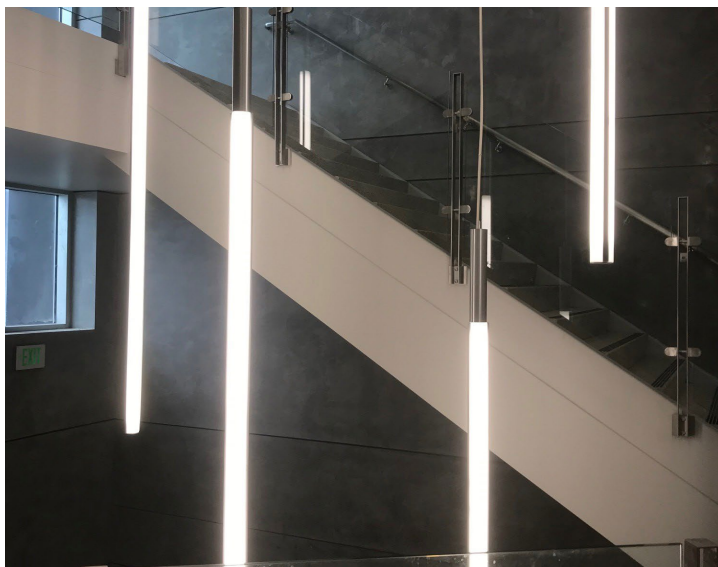


★ ELECTRICAL COMMERCIAL

Project Budget:	Over \$1 Million
Company:	Willmar Electric Service, Corp.
Award:	EAGLE
Project:	Wright County Justice Center

Providing the public with an improved, accessible and quality justice center went hand-in-hand with the County's mission to "Provide citizens with responsive government and quality services in a fiscally responsible manner through innovation, leadership and dedication." Willmar Electric Service partnered with Construction Manager Contegrity Group, Inc. to help construct the \$42.9 million, four-story, 150,562 square-foot justice center in Buffalo, Minnesota. Willmar Electric Service provided electrical installation for nine new courtrooms, judges' chambers, administrative spaces, and a secure/holding detention area with a connecting link to the existing Wright County Detention Center. Along with the electrical installation, Willmar Electric Service also provided the installation for telecommunication and fire alarm. Throughout the project, Willmar Electric Service was able to put the client first by offering value engineering solutions, implementing lean construction methods, taking time to do on-the-job education, while still maintaining our standard of productivity without compromising the safety of co-workers or other tradesmen.

Upon completion, Willmar Electric Service was able to provide a quality facility which serves the local government, as well as the public sector.



★ ELECTRICAL INDUSTRIAL

Project Budget:	Over \$5 Million
Company:	Knobelsdorff Enterprises
Award:	PYRAMID
Project:	ADM Mendota

Archer Daniels Midland Company (ADM) is one of the world's largest agricultural processors and food-ingredient providers. Founded in 1902, ADM has been transforming crops into products for more than a century. It was a high-pressure job. It was this the largest KE project to date, and it was going to be a vital cog in the local economy, not to mention the country's food supply chain. To pull it off, we had to provide engineering, design, procurement, installation, start-up, and commissioning for:

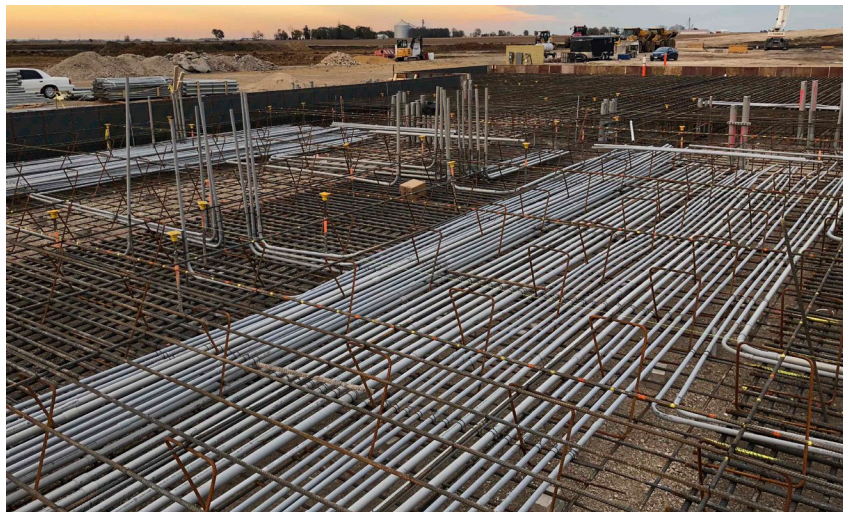
- 35 kV distribution system
- 480-volt power distribution
- Industrial Ethernet network
- Process controls system install
- Facility lighting

We also provided engineering, design and installation for the conduit, wired the lighting and emergency lighting system, fire alarm system, smoke detection, explosion detection, and hazard monitoring systems.

The new construction project also included:

- More than 140 acres.
- A loop track with 110-car shuttle rail unloading capacity.
- Three milling units with centralized monitoring to ensure performance, consistency, and security of supply.
- Three bulk truck loadouts and rail load-out capability.
- A high-speed packer and a 30,000-square-foot warehouse.
- A brand-new lab with the most up-to-date quality control equipment.
- An onsite transportation company, including a truck wash and an advanced truck facility utilizing RFID technology to ensure efficiency and accuracy.

The mill remains outstanding in its field, offering the most up-to-date monitoring and quality-control; swift and efficient packing and transportation options; and the ability to mill a wide array of wheat varieties. It accomplished everything ADM set out to achieve, and more.





HORIZON roofing

“
TO ALL HORIZON STAFF WHO WORKED ON OUR PROJECT, THANK YOU FOR A JOB WELL DONE. IT HAS BEEN A VERY EASY PROJECT FOR ME FROM START TO FINISH, YOU HAVE DONE EVERYTHING AGREED TO AND MORE. I WANT TO THANK YOU AND LET YOU KNOW THAT WE APPRECIATE ALL YOUR EFFORTS AND WILL MOST DEFINITELY CONTACT HORIZON FOR ANY OTHER ROOFING PROJECT WE MIGHT HAVE, THANKS AGAIN.
”

EXPERIENCE | **44 YEARS IN BUSINESS** | **70 - AND COUNTING - AWARDS WON**

STP: (612) 333 - 1481 | STC: (320) 252 - 1608 | www.HorizonRoofingInc.com



Stylish Solutions for Your Projects

The latest in flooring and lighting with over 45 years of industry experience.

45

MCI CARPET ONE®

FLOORING • LIGHTING • WINDOW TREATMENTS • COUNTERTOPS
YEARS LOCALLY OWNED

26 1st Ave N, Waite Park, MN
320-253-5078
www.mcicarpetonewaitepark.com

Mon-Fri 8AM-7PM, Sat 9AM-4PM, Sun 10AM-3PM

Locations in Waite Park, Baxter, Mankato, Champlin and Sioux Falls, SD

BEST WINNER

Beautiful

LIGHTING ONE

houzz

Instagram

Facebook

As Responsive as You Need Your Labor and

PRK&A

Peters
Revnew
Kappenman
Anderson

The Lawyers for Employers

Large Firm expertise. Small firm service, value and efficiency.


At Peters, Revnew, Kappenman & Anderson, P.A., we understand that our clients need to stretch their legal budgets as far as possible while still achieving their business goals. Unlike some of our competitors, we ensure that our clients receive the right level of service to achieve the desired result. No more. No less. We provide the best value for the legal dollar in the Upper Midwest.

Through our membership in the Worklaw® Network our clients also have access to top notch representation throughout the USA, Canada, Europe and Asia. This network of independent management-side law firms provides our clients with the same dedication to efficiency and results that we do here.

To get Peters, Revnew, Kappenman & Anderson, P.A. and the Worklaw® Network working for you, **call Tom Revnew** or any of our lawyers at 952-896-1700 or visit us at prkalaw.com.

Peters, Revnew, Kappenman & Anderson P.A.
7300 Metro Blvd., Suite 500
Minneapolis, MN 55439

CHAPTER COUNSEL SINCE 1982



worklaw® network.

REPRESENTING EMPLOYERS IS ALL WE DO. WWW.WORKLAW.COM

★ RESIDENTIAL MULTI-FAMILY

Project Budget:	Over \$5 Million
Company:	Brennan Construction of Minnesota
Award:	EAGLE
Project:	The Wings At Newport

Brennan Companies was hired as the General Contractor to build a ground up 200-unit apartment building as well as a separate standalone retail center. The 190,000 SF wood frame building wraps around a central courtyard. The main building was completed in 3 phases to maximize the construction schedule, get all trades working as soon as possible and get the project open in the 15-month schedule. The 55+ complex allows for socialization and self-sufficiency for the baby boomer generation. The gathering spaces include a large movie/community room, fitness center, activity rooms on each floor, café, outdoor walking path and a courtyard.



Congratulations **Brennan Construction!**

SOULO is honored in being a partner with you on
The Wings of Newport project.



SOULO

A CREATIVE PRODUCTION AGENCY



- Strategy and Brand Design
- ADA and Directional Signage
- Exterior and Interior Signage
- Printed and Distraction Vinyl
- Printing
- Website and Digital Marketing
- Technical Writing and Illustration

763-231-0727

soulocom.com



***THE BIGGER.
THE UGLIER.
THE BETTER.***

If we can perform design-build electrical services for some of the largest facilities in the U.S., imagine what we can do for you.

***LET'S GET TO WORK.
KEWAY.COM***

★ RESIDENTIAL MULTI-FAMILY

Project Budget:	Over \$5 Million
Company:	Lyon Contracting, Inc.
Award:	PYRAMID
Project:	Lake Jonathan Flats Apartments

Lake Jonathan Flats Apartments in Chaska, MN is a new four (4) story, 117-unit apartment building built over two levels of below grade parking. The project is built on the side of a hill that slopes down to Lake Jonathan. The front of the building facing MN Hwy 41 appears to be your typical 4 story loft style apartment building. The back side of the building ranges between 5 & 6 stories with a 17' high retaining wall adjacent to the existing bike path that runs along the lake.

The buildings parking level structure required some unique engineering. At the front of the building the structure was 2 levels below grade, while at the sides & back of the building there is up to 2 levels exposed. This created a loading condition, when the structure was backfilled, that wanted to push the structure into the lake. Lyon working with the owner, design team, Molin & the earthwork subcontractor came up with a solution to backfill the front of the building with 10,000 CY Recycled Tire Chips. Backfill the building with tire chips served two purposes, 1) reduce the shear loads of the material pushing against the building. 2) Diverted 10,000 + cy of scrap rubber tires that otherwise be sitting in a landfill.

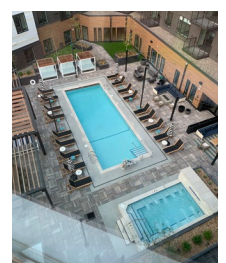
This building has a unique location next to Lake Jonathan offering beautiful views you would not find at most apartments. Modern luxuries were incorporated into each unit to entice the right residents who want relaxation within the city limits.



★ RESIDENTIAL MULTI-FAMILY

Project Budget:	Over \$5 Million
Company:	Stevens Construction Corp.
Award:	HONORABLE MENTION
Project:	Avidor Minnetonka

Avidor Minnetonka is a premier 55+ active adult community located in the heart of the vibrant suburb of Minnetonka. Surrounded by a flourishing neighborhood on all sides, Avidor is an oasis for active adults opting for a luxury, worry-free living concept. The five story, 276,900 square foot project features 168 residential units with heated underground parking. Previously the area was used as a parking lot for the neighboring Ridgedale Mall. Now the new Avidor project meshes seamlessly into the Minnetonka community. With an assortment of neighboring businesses and abundant landscaping, the building has a "right-at-home" feeling to both the community and residents. Ground level units have walk-out patios, units above have large balconies and all units have large windows to take in the views. Outdoor amenities include a terrace with pool and spa, grilling stations, lounge areas, and fire pits that give the residents a "vacation" feel without having to leave their home. Project is owned by Trammel Crow Company of Chicago and was designed by ESG Architects of Minneapolis.



★ RESIDENTIAL MULTI-FAMILY

Project Budget:	Over \$5 Million
Company:	Stevens Construction Corp.
Award:	EAGLE
Project:	The Lorient

The Lorient apartments, is a delicately positioned one-of-a-kind luxury residential community in Edina, Minnesota. The project replaces a dry cleaner and an out-of-business movie theater. Considered a gateway to the north side of Edina, the 45 degree corner of France Ave South and Sunnyside road is now home to a four story mixed-use building featuring 45 market rate -one and -two bedroom units, 3 affordably priced units that are handicap accessible, 6500 square feet of restaurant/retail space, 69 underground parking spots, and 40 surface level public parking spots. Building amenities also include a second floor community room with fireplace, private dining room and full kitchen, an outdoor terrace area with fireplace and grilling stations, and a roof top terrace overlooking the city. The urban redevelopment brings new life to this highly visible site in Edina. Project is owned by Orion Investments in collaboration with United Properties and was designed by ESG Architects of Minneapolis.



★ OTHER SPECIALTY CONSTRUCTION

Project Budget:	Over \$1 Million
Company:	Knobelsdorff Enterprises
Award:	PYRAMID
Project:	Nautilus Portfolio

In 2019, Knobelsdorff served as EPC contractor and completed four solar projects for Nautilus, totaling 21 MW DC in Minnesota. KE built the four sites as the full engineering, procurement, and construction (EPC) firm. The four sites, Helen, Warsaw, Northfield, and Walcott, proved to be a challenge to complete, but we love nothing more than a good challenge. KE provided the mechanical, electrical, civil construction and commissioning services for these projects.

All projects utilized bifacial modules, single axis trackers with Northfield being a fixed tilt system; fixed priced contract for all. Project owner is Nautilus. Additional contractors/suppliers on the projects included: Frattalone, Grassland, Boarder States Electric, RP Construction Services, and RamyTurf.

Our Energy team is built on our company's value of always doing the right thing for our customers and our people. Our people include our employees, their families, our customers, and our vendors. We have developed a strong relationship with preferred sub-contractors through numerous successful solar installations. These relationships proved to be crucial on the Northfield project, where we experienced an issue which could have potentially delayed the project by weeks. By tapping into our trusted and valued partners, we were able to quickly strategize and execute an efficient and safe solution.

In 2019, KE was ranked #23 for solar contracting nationwide and #1 in the state of Minnesota. Over the past couple years, we have installed more than 350,000 kW of solar energy, contributing to a more sustainable future.



★ SPECIALTY CONTRACTING – INTERIORS

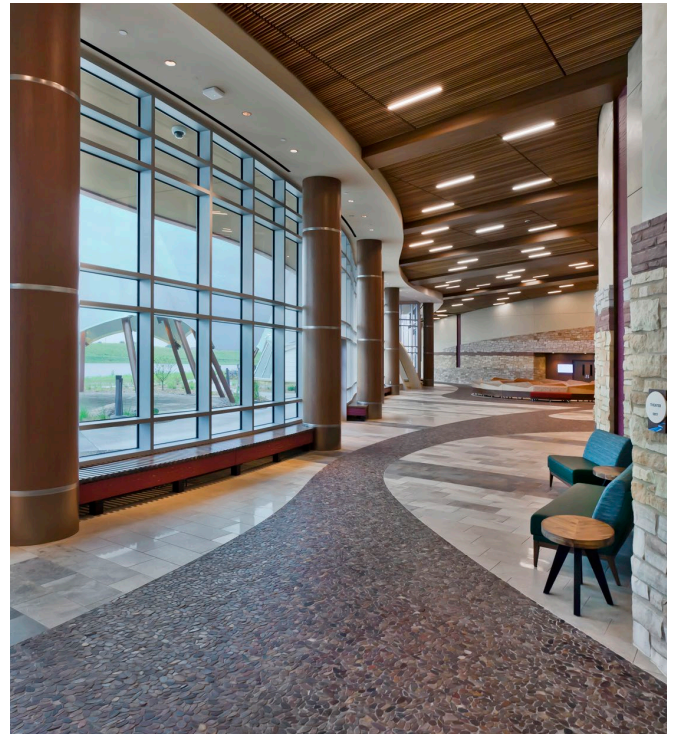
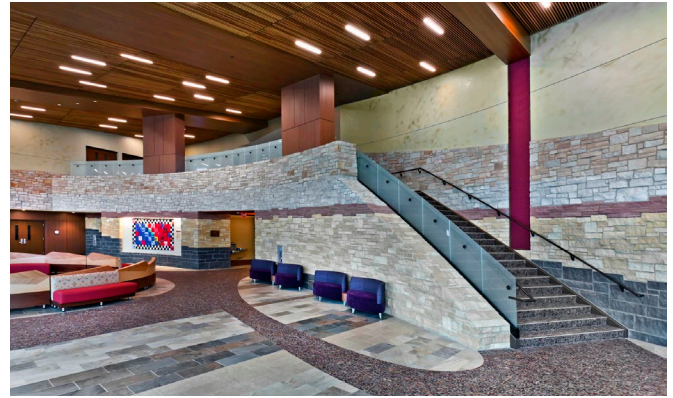
Project Budget:	\$500-\$1 Million
Company:	Grazzini Brothers & Company
Award:	EAGLE
Project:	Shakopee Mdewakanton Sioux Community (SMSC) Cultural Center

Shakopee Mdewakanton Sioux Community's (SMSC) Cultural Center is a new 92,500 square foot, multi-purpose facility, officially called "Hocokata Ti." It serves as a community gathering space, cultural activity site, and a 3,805 square foot public exhibit chronicling the history of the Shakopee Mdewakanton Sioux tribe. The \$41 million SMSC Cultural Center features seven 58-foot high tipis, and a uniquely constructed building.

The two-story multi-use cultural center contains more than 20,000 square feet of meeting space combined with its 3,805-square-foot public exhibit and museum, a commercial-grade kitchen, dining room and theater. Its radiused interior concrete walls and curved exterior curtainwall system with floor to ceiling electrochromic glazing make up the River Gallery space. The gallery connects the building elements from one end of the building to another while providing amazing views to the seven tipis and the water feature.

Grazzini Brothers installed over 28,000 square feet of ceramic floor, stone mosaic floor and wall tile, ceramic tile base and glass wall tile throughout SMSC. The areas include: The River Gallery in the Lobby, Men's and Women's Locker Rooms, Showers, Restrooms, Grand Staircase, and Atrium Entrances. The layout of the river rock pebble mosaics was designed to mimic the look of the flowing Minnesota River throughout the River Gallery and the Hall of the Dakotas.

Shakopee Mdewakanton Sioux Community's Cultural Center has been awarded the 2020 National Tile Contractors Association Five Star Contractor Project of the Year Award, the 2020 American Association for State and Local History Award of Excellence, and the 2019 Finance & Commerce Top Project of the Year Award.



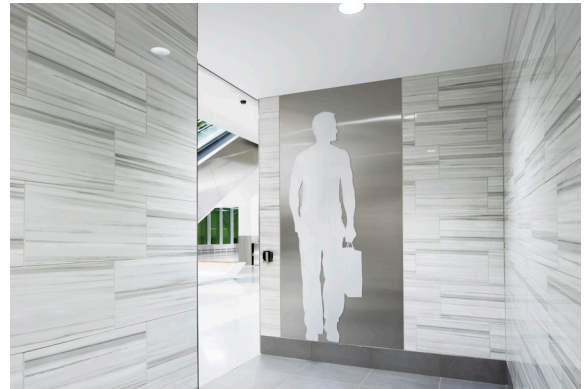
★ SPECIALTY CONTRACTING – INTERIORS

Project Budget:	Over \$1 Million
Company:	Grazzini Brothers & Company
Award:	PYRAMID
Project:	Williston Basin International Airport – Passenger Terminal Building

The new \$273 million Williston Basin International Airport (WBIA) replaces the existing Sloulin Field International Airport, which was operational since 1947. The new 110,000 square foot, two level international airport passenger terminal building is in Williston, North Dakota. The new airport has four gates with 3 passenger boarding bridges and features a 7,500-foot main runway to accommodate larger airplanes. WBIA will service northwest North Dakota and northeast Montana.

Grazzini Brothers installed over 32,900 square feet of thin-set epoxy terrazzo floor in 11 colors with a sweeping radius design, precast epoxy terrazzo stairs, and 15,000 square feet of ceramic floor and wall tile in Men's and Women's Restrooms, Unisex/Family Rooms and Bar area.

Williston Basin International Airport has been awarded the National Terrazzo & Mosaic Association 2021 Honor Award, the Aviation Pros 2020 Airport Business Project of the Year, the ENR Mountain States Best Project of the Year Award, the Great Lakes Chapter of the American Assoc. Commercial Airport Project of the Year and the North Dakota Aeronautics Commission 2019 Commercial Service Airport of the Year award.



★ SPECIALTY CONTRACTING – EXTERIORS (ROOFING)

Project Budget: \$500,000-\$1 Million

Company: Horizon Roofing, Inc.

Award: PYRAMID

Project: Avidor Minnetonka

In early 2020, Horizon Roofing, Inc. was contracted to complete the roof for Avidor, a premier 55+ active adult apartment community in Minnetonka. Avidor prides itself on “providing residents a renewed sense of purpose with the luxury of time to explore a lifestyle that fulfills them and brings meaning to their day.” In a time when older adults are opting for a luxury, worry-free living concept, Avidor owners looked to capitalize on this opportunity making the Minnetonka location the second to be built in Minnesota this year. While Avidor Minnetonka is not yet open, the demand is high, and the building will fill up soon with happy tenants! Working on new construction has many challenges, and the Avidor project makes no exceptions. We came face-to-face with the weather and material challenges during our six-month journey, faced pressure working alongside a roofing consultant, and excelled in reporting, quality, and workmanship. All of those come together to make this a unique and challenging project, one we are honored to have received an award for.



★ SPECIALTY CONTRACTING – EXTERIORS (ROOFING)

Project Budget:	\$1–5 Million
Company:	Horizon Roofing, Inc.
Award:	PYRAMID
Project:	Coldspring Granite West

In the late spring of 2019, Horizon Roofing, Inc. was contracted to complete a full roof retrofit at Coldspring (formerly Coldspring Granite), a natural stone manufacturing facility and bronze foundry in Cold Spring, Minnesota. While its headquarters is located about 20 miles southwest of St. Cloud, Coldspring's footprint extends far beyond Minnesota. With additional fabrication sites and 30 quarries located across the country, Coldspring is one of the largest natural stone manufacturers in the United States and Canada. At 132,000 sq. ft., this roof is one of the largest metal roof replacements in the state in 2020 that we are aware of. Due to this project's sheer size, there were many unique features to this project. Perhaps the most unique being the panel formation itself. With the length of the panels measuring up to 146 feet long, we needed to create the panels on site. Using a roll former hoisted 44 feet into the air, we were able to make and disperse a total of 72,843, aka 13.7 miles, of metal panels over the rooftop. Our solution-driven mindset allowed us to successfully complete this project and we are proud to receive an award for this unique project!





ABC members strive for world-class

SAFETY AND HEALTH

There's never been a more important time to adopt a safety and total human health program that helps your organization achieve world-class excellence. We provide safety resources that our members can use to exceed safety standards and shape corporate cultures.

Count on ABC to guide your employees on their safety journey.

ABC—Helping members win work and deliver work safely, ethically and profitably for the betterment of the communities in which they work.

TOUGH. TRUSTED. SAFE.

Visit mnabc.com or ndabc.com to learn more.





ACCOUNT MANAGER



ESTIMATOR



PROJECT MANAGER



SAFETY DIRECTOR



H.R. MANAGER



ACCOUNTANT

You wear a lot of hats, marketing manager doesn't have to be one of them.

If your staff is stretched thin, you need a team player who can step up and take projects off your plate. We understand business-to-business marketing and can help you get the results you need. We're engaged and ready to help you with effective, affordable marketing solutions. Make every penny (and minute) count with a creative partner who can hit the ground running. **We're here for you!**

Solutions for Every Challenge

- Graphic design
- Flyers & posters
- Direct mail
- Presentations
- Signage & displays
- Brochures & catalogs
- Social media
- Marketing management
- Printing & mailing
- Incentive products

pernstainer
marketing • publications • partnerships

Need marketing help? Contact Todd Pernsteiner:

(952) 841-1111

todd@pernstainer.com

www.pernstainer.com

