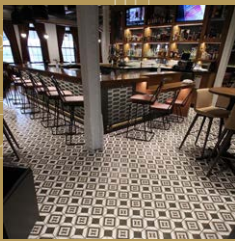
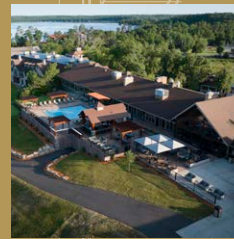


Excellence in Construction AWARDS

2023 PROJECT WINNERS



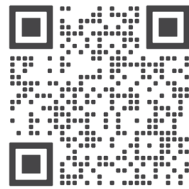
EMPOWERING EXCELLENCE BEYOND CONSTRUCTION

In addition to utility-scale Wind and Solar EPC projects, our crews are equipped to manage a range of tasks, including small wind and solar installations or catastrophic rebuilds.

We understand that your project extends beyond construction completion, and we have teams prepared for various needs, from routine inspections to complex repairs, ensuring your site maintains peak performance.

FIND YOUR SOLUTION

ELECTRICAL / SOLAR / TURBINE / SPECIALTY



MASTEC RENEWABLES COMPANIES:

BIANCHI ELECTRIC / IEA CONSTRUCTORS / WANZEK CONSTRUCTION

MASTEC.COM

 **MasTec**
Clean Energy & Infrastructure

Excellence in Construction Awards



TABLE OF CONTENTS

STEP Awards	3
2023 Hall of Fame Inductee	4
2023 ABC Woman Contractor of the Year	4
2023 Excellence Award Winners	
Mega Projects	5
Industrial Construction	6-11
Commercial Construction	12-14
Institutional Construction.....	15-16
Infrastructure - Heavy Highway	17
Healthcare Construction	18-19
Pre-Engineered Buildings	20
Electrical - Industrial	21
Electrical - Commercial.....	22
Renovation.....	23-25
Residential	26
Residential - Multi-Family.....	27-29
Specialty Contracting - Interiors	30

Associated Builders and Contractors, Inc. Minnesota/North Dakota Chapter

Minnesota Chapter 10193 Crosstown Circle, Eden Prairie, MN 55344 Phone: (952) 941-8693 www.mnabc.com	North Dakota Council 4511 15th Avenue Fargo, ND 58102 Phone: (701) 238-8853 www.ndabc.com
---	--

ABC MN/MNOSHA Partnership

LEVEL 1

- A.B. Systems, Inc.
- Berd Electric
- Cedar Lake Electric, Inc.
- Dale Gruber Construction, Inc.
- Electrical Production Services
- Fagen, Inc.
- Horizon Roofing, Inc.
- J-Berd Mechanical, Inc.
- Kuepers Architects & Builders
- Nor-Son Construction
- Security Fire Sprinkler
- Stevens Construction Corp.

LEVEL 2

- Bauer Design Build, LLC
- Enclave Construction, LLC
- Greystone Construction
- Laketown Electric
- Larson Building, Inc.
- Lyon Contracting, Inc.
- Marcus Construction
- MinDak Commercial Construction
- Rice Companies
- Schwickert's Tecta America
- Shingobee Builders, Inc.
- Stotko Speedling Construction, Inc.
- Willmar Electric Service
- Yellow Tree Construction Services

LEVEL 3, Cooperative Compliance Partnership

- Bauer Design Build, LLC
- Greystone Construction
- Lyon Contracting, Inc.
- Marcus Construction
- Rice Companies
- Shingobee Builders, Inc.

STEP Awards - For Contractors Who Promote Safety

ABC's STEP Safety Management System (STEP) recognizes the efforts of ABC members that strive to achieve effective safety practices at their firms and provides contractors with a tool to objectively evaluate their safety programs, policies, procedures and training. Using a template provided by ABC National, contractors evaluate their programs and receive certificates for qualifying at the Bronze, Silver, Gold, Platinum or Diamond levels. Contractors can use the one-year STEP certification as a business marketing tool and to improve safety at their firms.

2023 MN/ND ABC STEP Winners

DIAMOND LEVEL

- Building Restoration Corporation
- Custom Aire, Inc.
- Integrated Building Solutions
- Interstates
- Knobsdorff Enterprises
- Larson Building, Inc.
- Lyon Contracting, Inc.
- Marcus Construction
- Mindak Commercial Construction
- Olaf Anderson Construction, Inc.
- Shingobee
- STARCON, A Cianbro Company
- Stotko Speedling Construction, Inc.

PLATINUM LEVEL

- A.J. Moore Electric, Inc.
- Bauer Design Build, LLC
- Bladholm Construction
- Bradbury Stamm Construction
- Brennan Construction of MN, Inc.
- Met-Con Companies
- Miller Insulation Co., Inc.
- Oxentenko, Inc.
- Wanzek Construction, Inc.

GOLD LEVEL

- Bergstrom Electric, Inc.
- Electrical Production Services, Inc.
- Fagen, Inc.
- MCI Paint & Drywall
- The Weitz Company

SILVER LEVEL

- BCI Construction, Inc.
- Construction Engineers, Inc.
- Dorglass, Inc.
- Elcor Construction, Inc.
- Enclave Construction, LLC
- Horizon Roofing, Inc.
- John T. Jones Construction Co.
- Lunseth Plumbing & Heating Co., Inc.
- Northern Plains Contracting, Inc.
- PKG Contracting, Inc.
- Rice Companies
- Schwickert's Tecta America LLC
- Wieser Brothers General Contractor, Inc.
- Wolf Construction Services, Inc.

BRONZE LEVEL

- A.B. Systems
- Berd Electric, LLC
- Cedar Lake Electric, Inc.
- Charps, LLC
- Comstock Construction
- D & G Excavating, Inc.
- Dale Gruber Construction, Inc.
- Hy-Tec Construction
- J-Berd Mechanical Contractors, Inc.
- Laketown Electric Corporation
- Niemela Design and Construction LLC
- Nor-Son, Inc.
- R. J. Zavoral & Sons, Inc.
- Security Fire Sprinkler, LLC
- SCR
- Stevens Construction Corp.
- Sussner Construction
- Vos Construction Inc.
- Willmar Electric
- Yellow Tree Construction Services LLC

2023 ABC Hall of Fame Inductee

Phil Kraemer, Lunseth Plumbing and Heating



Lunseth Plumbing and Heating of Grand Forks and Fargo, will celebrate 40 years as an ABC member in 2024. And throughout their 40 years of membership, one key person at Lunseth has been a leader within our chapter.

Phil Kraemer, Vice President of Operations for Lunseth, has done just about everything we can ask of an ABC member since the company joined in 1984. When he's not wearing a Lunseth Plumbing and Heating cap around town, he can usually be spotted wearing a classic blue ABC hat.

He served as a trustee on ABC's Construction Education Foundation board for eight years. He is a regular contributor to ABC's political efforts and outreach with elected officials on merit shop legislation and issues. Not an ABC event goes by without Phil and other Lunseth employees attending. Phil also sits high atop the ABC Beam Club chapter leaderboard. The Beam Club recognizes individuals from ABC member

companies who recruit new members to the association. Phil has recruited 38 new members to ABC over the years!

Arguably the single biggest and most important contribution Phil has made to our chapter is helping expand ABC Minnesota into North Dakota in 2009. Seven ABC members formed the North Dakota Advisory Council and Phil stepped up to act as chairman of the council. Staff were hired to develop the membership base in North Dakota as ABC grew – all with Phil's guidance and support.

Phil will also celebrate 42 years with Lunseth Plumbing and Heating in 2024. Phil has announced he will retire from Lunseth as well as the ABC North Dakota Advisory Council in the summer of 2024. We want to thank Phil for his years with Lunseth and the years he has spent supporting our ABC chapter, advocating for merit shop contractors and our industry.

2023 ABC Woman Contractor of the Year

Laurie Plunkett, The Weitz Company



A leader in the construction field, Laurie Plunkett is passionate about merit shop design/build industrial construction. Throughout her 36 years in the industry, she administered components of construction projects across the USA and many parts of the world. Laurie is a dedicated advocate for women in the construction industry along with being a champion for Diversity, Equity, and Inclusion (DEI) within the industry.

Laurie is the Marketing & Communication Manager for The Weitz Company, Minneapolis, Minnesota regional office. Whereas Laurie may have one official title within the organization, she truly is the glue that holds Weitz Industrial group together with all the support functions she provides: Office Management, Human Resources (HR), Accounting, Information Technology (IT), Safety, Legal Support, Marketing and Communications, and Project Administration

Due to aggressive 2023 hiring need, Weitz' Human Resources (HR) department was overwhelmed with onboarding the abundant new field hires. Laurie undertook the onboarding of construction crews for several project sites. This required

on-site coordination with the new hires, field superintendents and project teams to complete the onboarding process and documentation. Laurie feels totally comfortable in steel toed boots, hardhat/helmet, and PPE gear.

Attention to details and an uncanny ability to get things done are Laurie's strongest skills. She is a taskmaster, she is organized, using her daily, weekly, monthly task lists, nothing gets away from her. She also keeps others on task, making sure activities get done on time and get done correctly. She personifies the best of the best skills, of a project team member.

In her free time, Laurie and her husband enjoy going RV camping. They enjoy the type of camping in which they take many of the comforts of home with them, some call this "glamping." Campfires, hiking, kayaking, and canoeing are part of Laurie's love for the outdoors.

Laurie is an extraordinary co-worker, employee, and associate! We at Weitz are privileged and honored to call her friend.

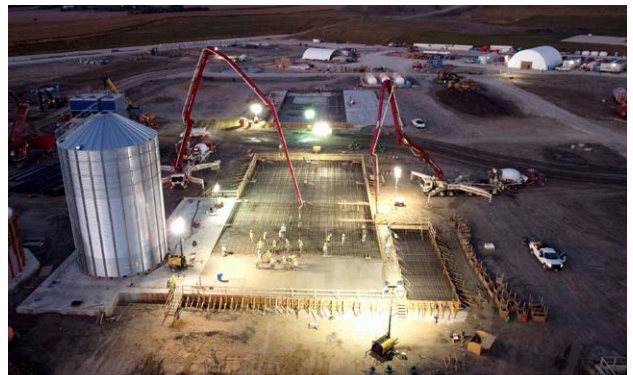
Congratulations, Laurie, on receiving this prestigious award!

★ MEGA PROJECTS

Category:	More than 100 Million
Company:	Fagen, Inc.
Award:	EAGLE
Project:	Shell Rock Soy Processing

In 2021, Fagen, Inc. was awarded the full EPC scope for the Shell Rock Soy Processing project. This project has a foot print of approximately 80 acres consisting of a preparation building, extraction building, oil storage building, meal building, boiler/utility building, all process and utility equipment, administration building, in-bound and out-bound scales, electrical infrastructures (both above and below ground), sanitary sewer, storm sewer, natural gas piping, domestic water piping (both above and below ground), and a complete civil infrastructure. The project truly broke ground in fall of 2020 with earth work crews moving in to reshape the land in preparation for the large project that was soon to follow. Because soy processing facilities have a lengthy permitting process, the only early work that could be done was dirt moving. The permit was submitted in September of 2020 and was finally approved in March of 2021.

Originally, the contracted substantial completion date was to be the end of 2022. In Fall of 2022, the Construction Team was asked to improve on the scheduled substantial completion date, pulling it to the beginning of December. Though this seemed like an impossible task, the Construction Team put their heads together and developed a revised plan that fit the desired request. Shortly thereafter, the plan was put into place and the needed gains required to make this possible became a reality. All Craft Department Heads really showed their high level of leadership skills by following the plans they had put into place, managing through the unknowns, and keeping all safe. This was by far the most impressive time of the project, as the level of coordination required was extensive and performed flawlessly. The beginning of December arrived, and though all were fatigued, the Team achieved their goal! Substantial completion was achieved on December 2, 2022.



★ INDUSTRIAL CONSTRUCTION

Category:	Over 20 Million
Company:	Fagen, Inc.
Award:	MERIT
Project:	MAG Blue Flint Ethanol CHP & Carbon Capture

Northwestern Energy selected Fagen, Inc. to build the Bob Glanzer Huron Generating Station, a nominal 60 MW reciprocating internal combustion engine (RICE) project located in Huron, SD. The project consists of six, 10 MW natural gas fired Caterpillar engines, with the capability of being dispatched multiple times per day, seven days a week. The facility is being used in a number of applications including providing capacity for peak-usage times, economic dispatch in real-time markets, intra-hour balancing, bulk electric system regulation and contingency reserves. The site is also being operated as a regulating and peaking power facility with varying run time per start. The site is connected to a 69 KV grid at Northwestern Energy's existing site substation.

This project offered some unique challenges to navigate. The new power plant was located on a property with an existing generating station located in Huron, SD. In addition to building the new generating station alongside the

existing facility and substation, there was a previously demolished generating station that the new engine hall was to be located on.

The existing Huron Generating Station provides regulation capability and peaking power needs to the electrical grid at 69 kV. The project scope of work included tie-ins to the existing generating station, the substation, site utilities and, in a few instances, upgrades to the existing facilities. The new generating station was located directly next to the existing operating facility, so care was taken from the design phase through construction and commissioning to ensure that Fagen and its subcontractors did not impact the existing operating facility.

We are especially proud of this highly technical generating station because we know the importance of the energy sector and the need for a robust and diverse energy grid to maintain the health and safety of communities across the United States.



2023 Award-Winning Project: The Townline



stevensconstruction.com
952.853.5100

Awards are won by outstanding
employees and partners.
We are grateful to have both.

THANK YOU!

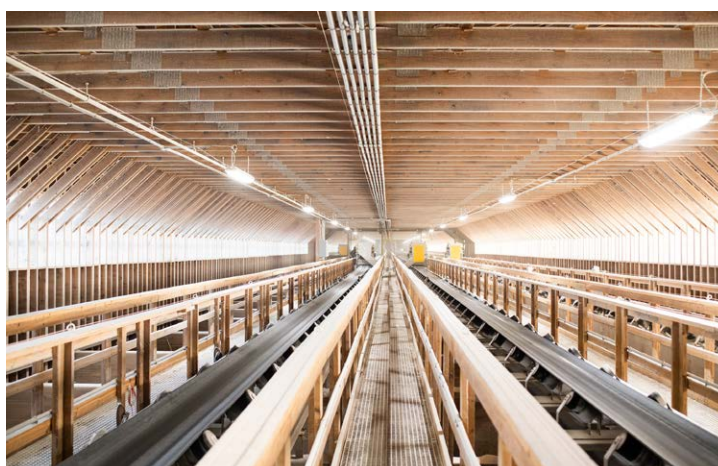
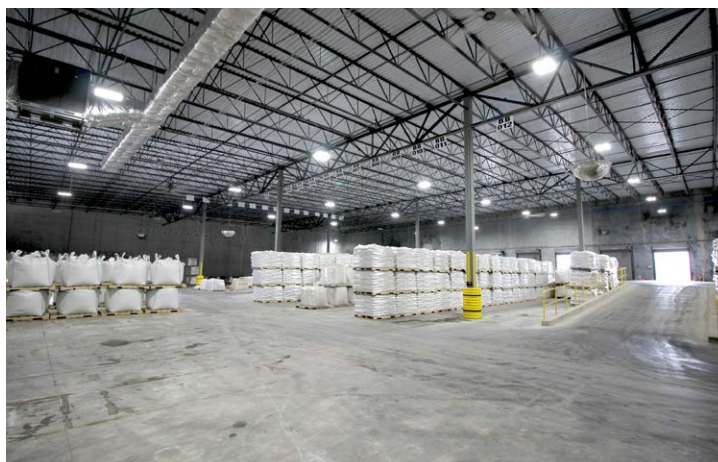
★ INDUSTRIAL CONSTRUCTION

Category:	Over 20 Million
Company:	Marcus Construction
Award:	EAGLE
Project:	NEUAG, LLC

Marcus Construction was the general contractor for this 30-acre greenfield site with the three main buildings being a 70,000 ton (100,000 sq. ft.) Ammonium Sulfate storage building, 67,500 sq. ft. bagging warehouse, and 34,000 ton (57,000 sq. ft.) NPK storage building. Other scopes of work included: 4,800 sq. ft. maintenance building, 2,250 sq. ft. processing building, six ladder track rail siding design for 100 car capacity, truck check-in and truck check-outs (this included two buildings and three truck scales), all site road paving, all utilities, site corrections, product handling equipment and automation, site security and safety.

Mother Nature made construction difficult many times throughout the two years of construction. From one of the hottest summers in Texas to abnormal winter conditions with freezing temperatures, to historic levels of rainfall in the state during our first 12-months of construction, to Hurricane Nicholas that brought extreme rainfall, flooding the site, and leaving the Houston area without power for days. Contractors had to adjust their working hours, starting in the early hours of the morning to avoid the heat, and there were lost days when the site was not safe for work.

But through it all, Marcus Construction delivered an extremely large and challenging project on time, within budget, and earned a tip of the hat from the client on a job well done.



★ INDUSTRIAL CONSTRUCTION

Category:	5–20 Million
Company:	Enclave Construction, LLC
Award:	MERIT
Project:	Sign Solutions USA

Sign Solutions USA is one of eight companies housed under DFC Company. In 2021, Sign Solutions partnered with Enclave to construct a new 100,000-square-foot premier facility.

As an expert in industrial builds, Enclave focused on understanding what the client needed to help grow their business and customized a high-quality product to support their long-term success.

Completed in August 2022, Sign Solutions was delivered to the client on time and within budget, offering a distinct and inspiring workplace for all, serving as a corporate office, manufacturing center and distribution hub for best-in-class transportation and safety products nationwide.



NORTH RISK PARTNERS®

FACE RISK HEAD ON

INSURANCE SOLUTIONS FOR
BUILDERS & CONTRACTORS

North Risk Offers 8 Different Health
Plans With Blue Cross Blue Shield

NORTHRISKPARTNERS.COM



30+ Locations Across the Midwest
& Licensed in All 50 States

★ INDUSTRIAL CONSTRUCTION

Category:	5–20 Million
Company:	Bauer Design Build, LLC
Award:	PYRAMID
Project:	Absolute Air

Bauer Design Build embarked on a groundbreaking project to construct an innovative air separation facility, setting it apart from traditional gas harvesting companies. This exceptional endeavor received funding from five independent gas supply firms in the upper Midwest, positioning it as a formidable competitor on the global stage.

Serving as the General Contractor, Bauer Design Build oversaw the construction of Absolute Air's state-of-the-art air separation processing facility. This encompassed everything from greenfield site development to the precise placement of concrete foundations and anchor bolts for equipment. The success of this complex operation hinged on seamless collaboration between architects, structural engineers, equipment installers, and Bauer Design Build's skilled project team.

Quality Assurance and Quality Control (QA/QC) played a pivotal role in the project's success. Accurate surveying of foundations, continuous model updates, and BIM Modeling ensured precision and compliance. Procore served as the essential tool for efficient information transfer and quality control observations.

Procore also facilitated transparent project management, enabling instant communication of plan changes and progress documentation. This proactive approach minimized setbacks associated with global equipment procurement and increased project flexibility.

The project demanded extensive coordination among the project teams, resulting in innovative cost-saving approaches such as the use of steel piles and rammed aggregate piers. The Project Manager and Superintendent played integral roles in budget management and on-site safety.

Bauer Design Build successfully navigated numerous obstacles, including challenging soil conditions and the complexities imposed by the pandemic. These hurdles led to creative solutions and demonstrated the team's unwavering commitment to delivering a cutting-edge air separation facility that benefited small air suppliers and reduced costs for their customers.

In conclusion, Bauer Design Build's project showcased innovation, quality control, and adaptability in overcoming obstacles to deliver a state-of-the-art air separation facility, setting a new standard in the industry.



★ INDUSTRIAL CONSTRUCTION

Category:	5–20 Million
Company:	The Weitz Company
Award:	EAGLE + President's Award - Highest Score
Project:	Cargill Modular Research Feed Mill

The Weitz Company designed, fabricated, and erected the Cargill Incorporated modular research feed mill. As general contractor, Weitz self-performed all the equipment installation, structural steel erection and millwright work. The Weitz project management staff administered several other merit shop subcontractors—electrical, process mechanical, building erection, painting, and other activities. Weitz used a modular construction method where fabrication and equipment installation is completed off site in a factory-controlled environment, then transported to the final destination where the modules were placed inside a finished building to complete the animal feed production facility.

The nearly \$12 million, 8,000-square-foot facility is comprised of 1,000 tons of ingredient storage and multiple systems for processing raw ingredients into formulated diets for livestock. The entire process is controlled from a central computer workstation. Production-sized systems, rated at a capacity of 5 tons per hour, included receiving and transfer, ingredient formulation batching, grinding, and mixing, pelleting, topical coating, and packaging.

The Cargill modular research feed mill serves multiple purposes: 1) provide the livestock on the Cargill's research campus with formulated diets; 2) provide a "hands-on" environment for training Cargill feed mill operators; 3) provide a food science laboratory for Cargill nutritionists and researchers to experiment with new diets.

Weitz used an integrated team approach in selecting major subcontracts with fellow ABC members, Interstates (IA), ACI Mechanical (IA), Shingobee Builders, a Certified WBENC (MN) and five (5) additional specialty Merit Shop subcontractors and suppliers were utilized to make this project successful. Working with very familiar and seasoned partners not only made the project successful but made it enjoyable for all team members especially Cargill – it was "one big happy family". Weitz has proven many times that the best costs and best performance comes from subcontractors that you know, worked with before, and have the right "teaming" attitude.

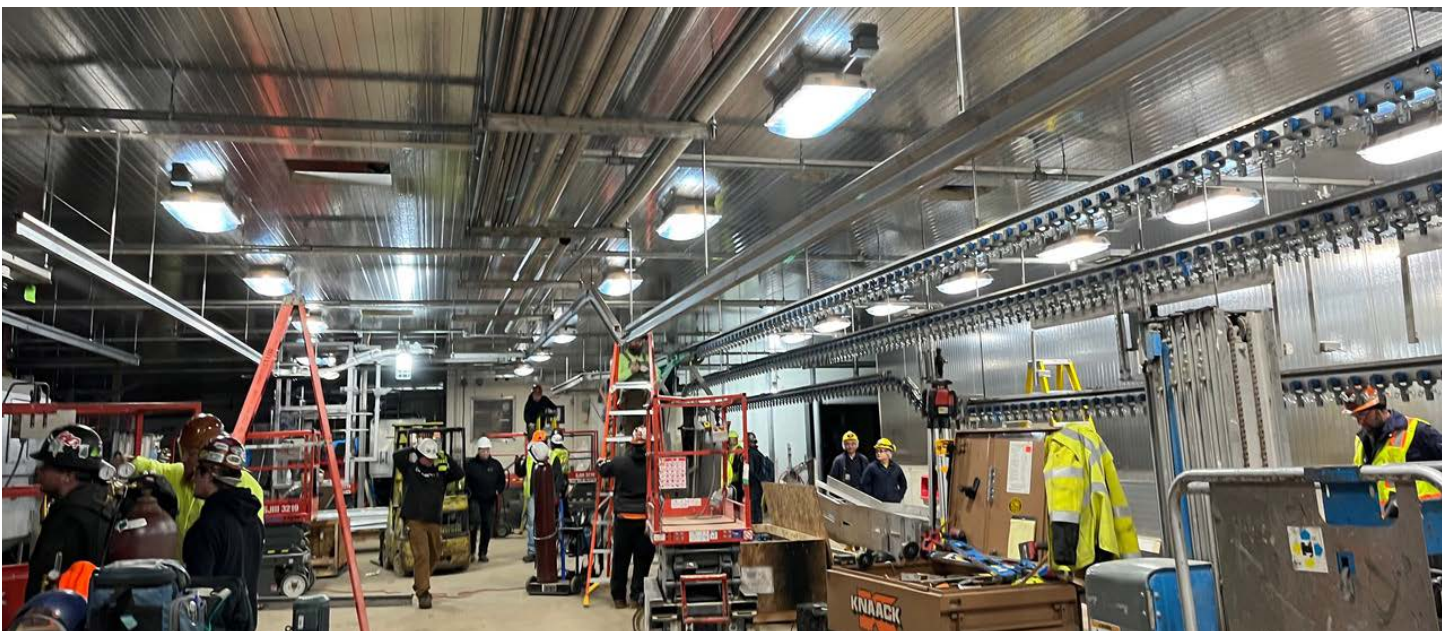
**NATIONAL
EIC PYRAMID
AWARD
WINNER**



★ INDUSTRIAL CONSTRUCTION

Category:	1–5 Million
Company:	Met-Con Companies
Award:	PYRAMID
Project:	Jennie-O Evis Project

Jennie-O Turkey Store in Faribault, MN contacted Met-Con Companies in August of 2021 involving a project on their Evisceration room, from that day forward, planning, scheduling, and meetings on how to perform this job safely and efficiently as possible were had until the start date. The Jennie-O Evis Project was a highly sensitive project for both timeline and safety. The area of the building where the project was taking place was constructed in 1957, it was time to upgrade some things. Fourteen contractors worked in an 18,500 square foot area for 24 hours a day and nine days straight. The urgency to complete this project in the limited time and work area required Met-Con and all contractors present, to be aware and mindful of everything going on around them; every area had high levels of foot and equipment traffic. Difficulties and unique circumstances were anticipated. The project took place in late February 2022 with winter weather playing a huge factor. During this project a blizzard shut down schools and businesses in the area. Due to the extreme weather, Met-Con booked hotel rooms for employees that lived out of town to ensure safe travels to and from the job site. Roofing reinforcement was critical to maintain a water-tight building to avoid any damage or delays. Temporary heaters were piped into spaces where the wall openings were created to keep existing water lines from freezing. Despite extreme weather conditions and long work hours, Met-Con had 100% attendance by employees on this project. Full commitment from all contractors on site was appreciated and required to perform and complete this project. Met-Con has been doing work with Jennie-O Turkey Store in Faribault, MN for 40+ years. Met-Con would like to thank Jennie-O for trusting us all these years to complete numerous projects including the Evisceration Project.



★ COMMERCIAL CONSTRUCTION

Category:	1–5 Million
Company:	WEB Construction Co., Inc.
Award:	EAGLE + Productivity Award for Snow Removal
Project:	Dotson Wellness Center

In December 2020, Dotson engaged WEB Construction as the Construction Manager following an RFP process. With a client relationship spanning over 30 years, Dotson entrusted WEB Construction with their vision for a cutting-edge employee wellness center.

Collaborative efforts began swiftly with the design team, assessing design viability, providing real-time construction cost updates, conducting constructability reviews, and crafting a comprehensive project schedule. This commitment extended through every phase, systematically identifying opportunities to optimize the project budget through alternative materials.

A meticulous construction schedule addressed supply chain challenges, securing staging and storage space to ensure timely access to materials.

To expand existing facilities and renovate offices, innovative safe access solutions were implemented, including analyzing alternate access points, temporary entrances, and safety measures for employee and visitor well-being.

The project integrated new plant areas, maintaining coexistence with ongoing operations, minimizing

disruptions across HVAC, structural, and electrical upgrades. It impacted existing parking infrastructure, leading to land acquisition for a dedicated parking lot.

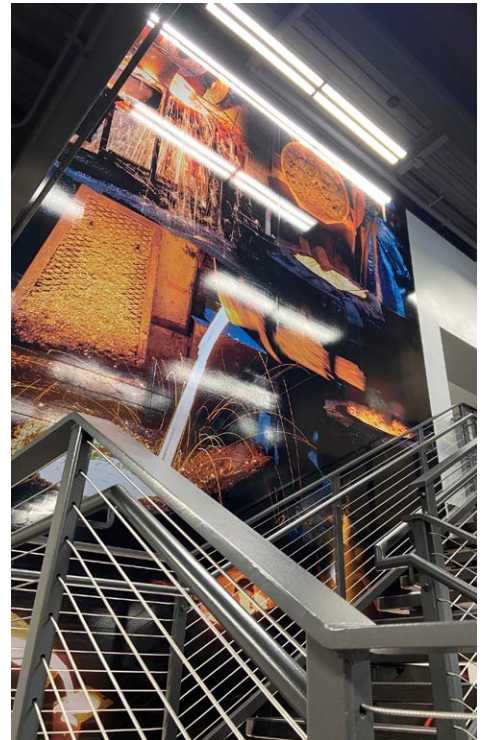
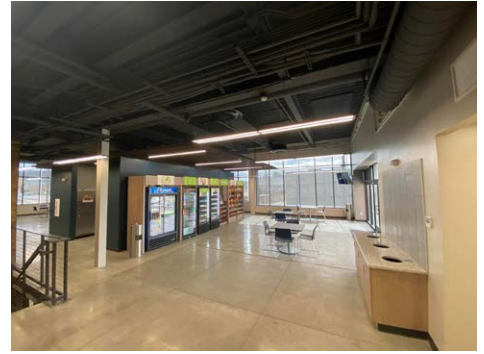
The forward-thinking shower/changing rooms are coed and designed with privacy in mind, including private full height changing and shower facilities, allowing for their facility to be inclusive of all genders and the flexibility to hire and be all-inclusive. Gender-neutral bathroom facilities are also scattered throughout the addition.

Above locker rooms, a rooftop patio for 250 people offers outdoor breaks and scenic park views.

Phases 1 and 2 included an indoor breakroom with natural light, kitchen facilities, and a food market concept cater to staff. Private prayer rooms, quiet rooms, offices, and conference facilities enhance the facility.

The entrance features a striking floating steel staircase with illuminated murals depicting foundry processes.

Phase 3 introduced a plant floor area as a secure transition zone for staff moving between the wellness center and the plant floor, equipped with time clocks, PPE dispensers, sinks, and drinking fountains.



★ COMMERCIAL CONSTRUCTION

Category:	Over 5 Million
Company:	Nor-Son Construction
Award:	PYRAMID
Project:	Anderson Group Corporate Office

Anderson Group, Inc. is an owner-operator holding company specializing in construction-related fields. They take businesses to the next level including Nor-Son Construction, a commercial construction services firm, and Nor-Son Custom Builders, a residential custom home builder. Officed above a local restaurant in downtown Wayzata since 2013, the companies were out of space and determined it was time to build a new office to serve their continued growth and expanding client base.

The goal was to create a dramatic impression with modern, clean lines, and commanding views. High-end, quality materials were of the utmost importance to reflect character, grandeur, and professionalism, but also maintain a responsible, cost-effective budget.

The focal point and overall framework for the entire building centered around a stately steel staircase, built to create the illusion of a floating stair. With steel already in place while the stairwell was designed, precise measurements within an 1/8-inch accuracy were required to align perfectly to the second level floor system.

Technology was a key component for the new office to optimize performance and efficiency for employees to move from office to conference room in a seamless transition. Each office has electronic stand-up desks, large high-definition monitors, and personal storage lockers.



★ COMMERCIAL CONSTRUCTION

Category:	Over 5 Million
Company:	Hy-Tec Construction
Award:	EAGLE + Productivity Award for Snow Removal
Project:	Brainerd Lakes Regional Airport

A crucial transportation hub for Brainerd and the surrounding area, the Brainerd Lakes Regional Airport has seen a dramatic increase in the demand for passenger air service and aviation as the population continues to grow. With the addition of runway 16-34, the airport was required to meet compliance with aircraft rescue and firefighting regulations, as well as solve runway visibility and access issues. The new Airport Rescue and Firefighting / Snow Removal Equipment (ARFF/SRE) facility is the most recent installment in the 20-year Airport Master Plan. The building was placed at the intersection of two commercial runways, to provide better rescue response and maintenance operations.

The airport was able to maximize federal funding through the CARES Act to begin implementation of critical infrastructure, including funding for the ARFF/SRE facility. Hy-Tec Construction was awarded the project in August of 2021 and did not receive a final contract until almost 4 months later, due to budgeting issues, governmental bureaucracy and federal funding delays. The 14-month deadline for substantial completion was critical or the airport would not receive all funding allocated for the project.

With a tight construction timeline and several long lead time items, Hy-Tec Construction expedited the shop drawing and approval process. Through extensive hours of collaboration, our team of architects, engineers, and contractors created a thorough virtual model of the facility. This allowed us to order all long lead time items prior to any dirt moving onsite.

The 39,000 square foot facility was completed early, in large part due to the reliable relationships between the team of subcontractors on the project. Each met the demands of the project and exceeded expectations. The new ARFF/SRE facility is a key piece of infrastructure to our airport and growing community.



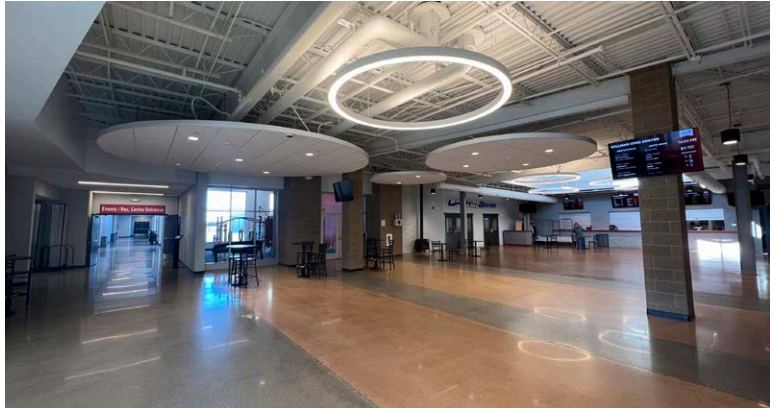
★ INSTITUTIONAL CONSTRUCTION

Category:	Over 5 Million
Company:	Marcus Construction
Award:	PYRAMID
Project:	City of Willmar

In the Fall of 2019, Marcus Construction was selected by the City of Willmar to be the Construction Manager and quarterback the design and construction of three sports facilities that were approved as part of a monumental local option sales tax for the city.

The game plan, was to reshape the recreational opportunities that the City of Willmar could offer the community by constructing a new 37,000 square foot Event and Recreation Center building, renovating an existing baseball complex, building a new pinwheel softball complex, and constructing two multi-use turf fields.

Marcus Construction is proud to say that all three projects for a total of \$15.7 million dollars, were delivered on time, under budget, and with great attention to detail and quality.



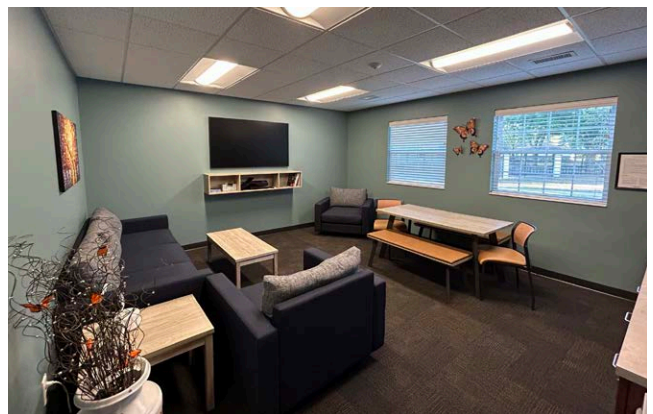
★ INSTITUTIONAL CONSTRUCTION

Category:	Less than 1 Million
Company:	The Joseph Company
Award:	PYRAMID
Project:	Nexus-Gerard Academy Entry Addition

Nexus-Gerard Family Healing is a residential treatment center that provides services for children ages 7-18 who are diagnosed with emotional and behavioral disorders. In the summer of 2022, Joseph Company was selected as the General Contractor for an addition and remodel to the primary entrance of their facility in Austin MN. The objective of the project was to enhance "family comfort" by providing a more welcoming primary entry to the campus which provides a critical first impression to new students and their families.

The 100-year-old building is one of the most historic structures in Austin having been previously owned by the Hormel family, founders of Hormel Foods Corporation. The project was to add on 1,850 SF to house a new reception area, three parent/partner offices, and two family rooms where children can spend quality time with their family during drop-offs and visits. Also included was an 800 SF remodel within the existing building as well as exterior improvements including new landscaping, bituminous in-drive, and porte-cochere.

The project was completed in May 2023 on schedule with zero safety incidents or injuries and under owner budget including changes in work.



★ INFRASTRUCTURE - HEAVY HIGHWAY

Category:	1–5 Million
Company:	R. J. Zavoral & Sons, Inc.
Award:	EAGLE + Innovation Award
Project:	Bourbanis Dam Partial Decommissioning Project

If you've been around the northern MN/ND area, you know there can be extreme winters. In April 2022, the Bourbonis Dam was subject to the aftermath of one of these extreme winters, where a major snow storm (between 12 and 30 inches of snow) was compounded by early rains and rapid melting. This resulted in flooding events throughout northern ND, including the Bourbonis Dam. When Houston Engineering, Inc. (HEI) got word that the Bourbonis Dam was failing, they acted quickly and in coordination with the ND and MN National Guards to set up pumps and hoses along with one-ton sandbags flown in by Blackhawk helicopters from the NDNG. These events led to fast-tracking of the partial decommission of Bourbonis Dam for final plans, permitting, bidding, and construction. HEI provided technical services for design, state permitting, bidding, and construction administration to help meet an aggressive construction timeline. R.J. Zavoral & Sons, Inc. were awarded the project in late July 2022 and we were given 21 calendar days to perform almost 90,000 cubic yards of excavation, and 14 days to process, haul, and place 3,000 cubic yards of riprap. We made the decision to work every single day on the project to complete the tight schedule. With a fleet of dozers, scrapers, excavators, articulated haul trucks, and compacters working on the excavation, and with the use of GPS technology, we had a plan to accomplish the job on schedule. However, we ran into similar problems that led to the initial flooding, as we were hit with extreme rain and an early snow. We were able to battle through the weather conditions and other obstacles along the way to complete this project. We are honored to be part of such an impactful project to the community and thankful for being given the opportunity.



★ HEALTHCARE

Category:	Over 5 Million
Company:	Enclave Construction, LLC
Award:	PYRAMID
Project:	Center for Special Surgery

The new home for Center for Special Surgery at River's Bend Medical Center in West Fargo was completed in June of 2023. Developed, built, and managed by Enclave, the 120,000-square-foot medical office building offers a connected suite of medical services, including a 30,000-square-foot Ambulatory Surgery Center, which is utilized by Center for Special Surgery's network of independent physicians.

In 2021, Center for Special Surgery partnered with Enclave to bring the state-of-the-art facility to life. From the beginning, Enclave's development team was instrumental in sourcing a location that would best fit the client and their plans for growth. Located off I-94, this building required visibility, easy access and close proximity to a regional hospital. Working closely with the owner, architect and consultants, a collaborative approach was essential to delivering a Class A medical building.

Throughout the build, the region experienced above-average snowfall and a record number of days below 40 degrees Fahrenheit, bringing daily challenges to the jobsite. To ensure the project stayed on schedule, the team evaluated each day to make the best use of their time and resources, determining what side of the building the team would work on to stay in the sun and out of cold winds and low visibility working conditions.

As seen across projects nationwide, the pandemic impacted timelines due to material delays and manpower. Constant monitoring of these aspects and a solution-oriented mindset was key to the project's success. Despite supply chain issues and material price escalation, Enclave was able to get this project done ahead of schedule, and significantly under budget despite several challenges.

Through proactive solutions, Enclave delivered a first-of-its-kind building to the region, fulfilling the client's goal of advancing the outpatient surgery experience.



★ HEALTHCARE

Category:	Over 5 Million
Company:	Lyon Contracting, Inc.
Award:	EAGLE
Project:	Hayden Grove of St. Anthony

Hayden Grove of St. Anthony is a new 135-unit, Senior Living Facility consisting of 24 Memory Care units, 28 Assisted Living units & 83 Independent units. The structure consists of 4 levels of wood framed construction over a 1 level below grade parking garage constructed out of concrete & precast. Many talented team members collaborated under Lyon Contracting's management to make this 4-story building an attractive new asset to the community.

Early in the preconstruction process, Lyon in conjunction with the design team were tasked with overcoming the site's potential pitfalls, while keeping the project costs down, and delivering a 1st class facility. From the onset we knew this was going to be difficult as there were a variety of potential obstacles & contaminations left from the previous mobile home park and laundry mat that once occupied the site.

Having overcome project delay's related to the utilities, the contaminated soils, the concrete & the precast in the spring of 2022, we felt that we finally had the project running on all cylinders having adjusted our schedules & accelerating everything we could to turn over the building by the end of the year, as originally scheduled. Unfortunately, a commonality in the market since the Covid-19 Pandemic still evident today is continued issues with the material supply chain.

Lyon Contracting would hold weekly check-in calls to determine when we would receive the permanent equipment, and then communicate that to ownership and the property management team to keep everyone updated on the status. This continued dialogue allowed management to work with future tenants to avoid major disruptions in their move in plans.

There are points throughout some projects where circumstances that are beyond our control seem to come together to undermine all the planning, hard work, and finances that have been invested in the idea. Lyon Contracting stayed committed to the original vision, turning, and pivoting at every obstacle, to deliver a new community that is a welcoming compliment to the City of St. Anthony.



★ PRE-ENGINEERED BUILDINGS

Category:	Over 5 Million
Company:	Greystone Construction
Award:	EAGLE
Project:	By The Yard

By the Yard, a manufacturer of high-quality, luxury outdoor furniture made from recycled milk jugs, has placed its trust in the Greystone Construction team over the past 20+ years to support its operational needs as the company continues to expand to meet higher demand of its beautiful, durable, and environmentally sustainable products. The 2022 expansion project doubled By the Yard's manufacturing footprint from 45,000 SF to 90,000 SF. The project team successfully navigated a number of challenges from poor soils, building in a floodplain, and a change in energy codes to ensure the project was completed on time and under budget.



★ ELECTRICAL - INDUSTRIAL

Category:	Over 1 Million
Company:	Knobelsdorff
Award:	EAGLE
Project:	Shell Rock Soy Processing

Building a new relationship takes time, it takes finesse, it takes trust. Knobelsdorff (KE) presented to Fagen, the GC on the job, how projects are executed, including design documentation, quality and labeling of our installations with a detailed focus on our commissioning process. The team then met for an onsite walkthrough to discuss KE's in-depth knowledge of the scope and what it takes to hit an aggressive schedule.

Electrical contractors design, install and maintain electrical systems, or, as some say, pull wire and bend conduit. The difference in a great electrical contractor is the approach to their work and the quality they instill in their execution.

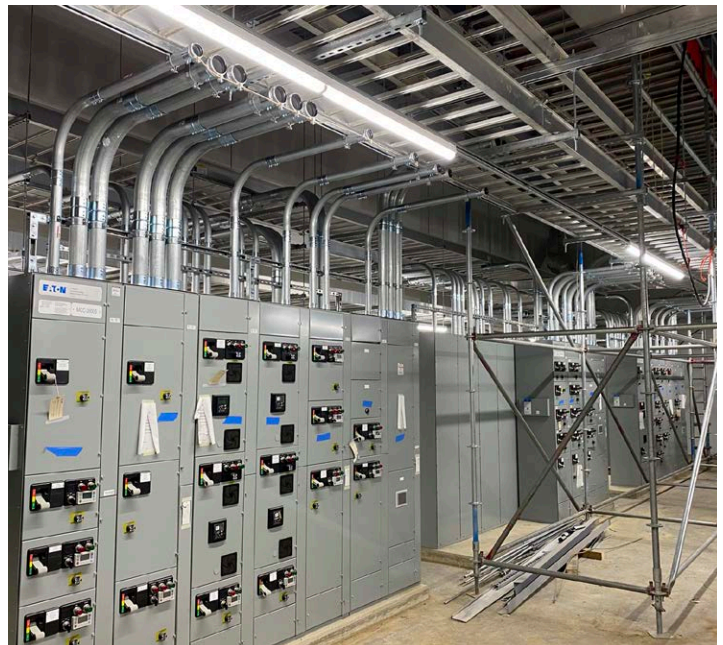
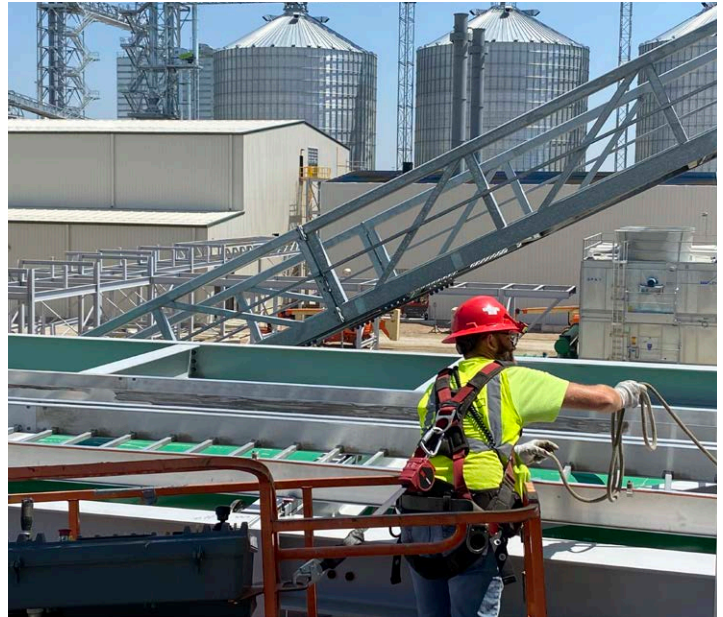
A challenging timeline and the specialized skills of KE fit with the skillset Fagen was looking for. Our knowledge of crush facilities and the different areas of classifications made it an excellent opportunity for KE and Fagen to build a relationship based on experience and trust.

And from there, a new relationship was born.

Shell Rock Soy Processing Plant processes soybeans to manufacture soy oil for sustainable fuel production, as well as manufacturing soybean meal and soyhull pellets. The facility annually crushes nearly 40M bushels of soybeans and is expected to produce 463 million pounds of crude soybean oil to be sold to refiners across the US to process for use by food processors and the biodiesel markets. As the project's electrical contractor, KE provided electrical design support, project management services, provided installation of electrical components and commissioning services, and start-up support of the facility process. Specifically:

- MCC's and motors
- Automation and controls
- General receptacles and lighting
- Testing and commissioning of MV cables, switchgear, and transformers

The site includes a receiving facility, meals and hulls storage, office and maintenance, preparation building, extraction building and boilers and cooling towers. KE provided services to preparation, extraction, and boiling and cooling towers.



★ ELECTRICAL - COMMERCIAL

Category:	500,000–1 Million
Company:	Electrical Production Services, Inc.
Award:	EAGLE
Project:	Maplewood North Fire Station

The Maplewood North Fire Station Project was designed by SEH Architects to replace a 40-year-old Fire Station for Maplewood, MN. After several years of strategic planning and one year of construction, the project wheels were set in motion. The new state-of-the-art fire station was designed to support eleven firefighters and EMS paramedics and featured seven apparatus bays for the fire and emergency vehicles. EPS was tasked to complete the electrical installation for the 34,800 square-foot, two-story facility that consisted of the unique installation for a ISOMET Safety System for the kitchen area, specialized emergency bi-fold opening doors, multiple dedicated station alert systems, and the integration of the automated outdoor and facility lighting systems. The new facility included a decontamination equipment room and multiple training centers.

Kraus-Anderson was selected as the General Contractor for the Fire Station and EPS was a proven partner who had worked with Kraus-Anderson before. During the summer of 2021, the former fire station was demolished, and the electrical project was awarded to EPS's Electrical Project Manager Eric Thoreson. In the months leading up to the start of the construction phase, Eric was diagnosed with cancer and needed to focus his attention on his health. The project was handed off to EPS Project Manager, Jason Sherman, who jumped right in and picked up where Eric left off. Jason worked closely with the assigned Electrical Lead Foreman, Travis Kaiser, who did an outstanding job completing the project on time and within budget. The EPS Electrical Team consisted of Field Supervisor Phil DeVlaeminck, and assigned Journeymen John Kleingarn, Travis Mielke, and Jamie Eckberg. Electrical Apprentices assigned to the project were Robert Palmer, Anthony Willman, and Jacob Struble. The Maplewood North Fire Station was a great example of a project that promotes EPS's values of service, excellence, and foresight.



★ RENOVATION

Category:	1–5 Million
Company:	Nor-Son Construction
Award:	PYRAMID
Project:	Madden's Inn Pool & Patio Renovation

Madden's Resort on Gull Lake has been a family-operated resort since 1929, rich in tradition and offering a luxury resort experience with a personal touch. The Madden Inn & Golf Club was built in 1964 atop a hill overlooking a well-established 18-hole golf course. The outdoor pool area was dated and beginning to show wear and tear from aging pool equipment to a single service bar.

Madden's wanted to create an outdoor experience for their guests with increased dining space for an upscale lounge cuisine. To avoid disruption to guests, Nor-Son renovated the space during the offseason, working through a record-breaking winter with limited site mobility, continual snowfall, and building temporary shelters to cure foundations and concrete.

A new saltwater pool was added with an easily accessible mechanical room under the patio. An outdoor shower was added to the pool with custom ornate gates dividing the pool area from the patio dining.

The result of months of hard work and determination is a beautiful patio with seating for 75 guests. An exposed wood timber and deck structure serves as the new venue with granite countertops and stone-surround wood columns for an "Up North" feel. Casual spaces with firepit tables and custom cedar pergolas were incorporated around the patio dining. Custom raised flowerbeds with irrigation lines encase the patio with custom iron railings and granite drink ledges overlooking the pristine golf course.

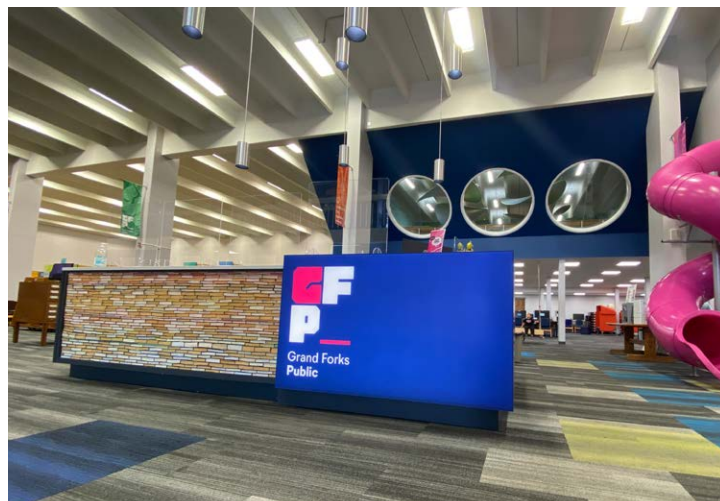


★ RENOVATION

Category:	1-5 Million
Company:	Construction Engineers, Inc.
Award:	EAGLE
Project:	Grand Forks Public Library

A playground for curious minds is the motto for the Grand Forks Public Library. The library hadn't seen a major renovation since 1984 and Construction Engineers brought the Design Team and Owner's ideas to life through a two-phase project. The first phase transformed the 23,000 SF main floor with bright colors, an indoor child's slide from the second floor, and interactive learning spaces. The scope of work included interior improvements of upgraded flooring and finishes, paint with colorful graphics, and new bathrooms. Construction Engineers' carpenters built a truly customized front desk with old bookends. More than 1000 books were cut and arranged in a rainbow of colors to create a one-of-a-kind reception desk design accent.

Phase two brought a complete transformation to the 16,500 SF second floor Children's Department, through a 'forest theme'. Again, the custom carpentry was extensive and all self-performed. It included an accessible, multi-level treehouse, a wooden waterfall, and a column-wrapped tree in the center with a bench circling the tree. So, kids can sit and read under a tree. This phase was completed with the library fully occupied, so all the children's books were moved to a temporary space on the first floor. When the renovation concluded, the books were moved back into the newly designed space. The project was finished just in time to begin the 2023 children's summer reading program. Completed on schedule and on budget, the Grand Forks Public Library Renovation is a new and improved playground that will serve all the curious minds well into the future.



★ RENOVATION

Category:	500,000–1 Million
Company:	Brennan Companies
Award:	PYRAMID
Project:	CLA

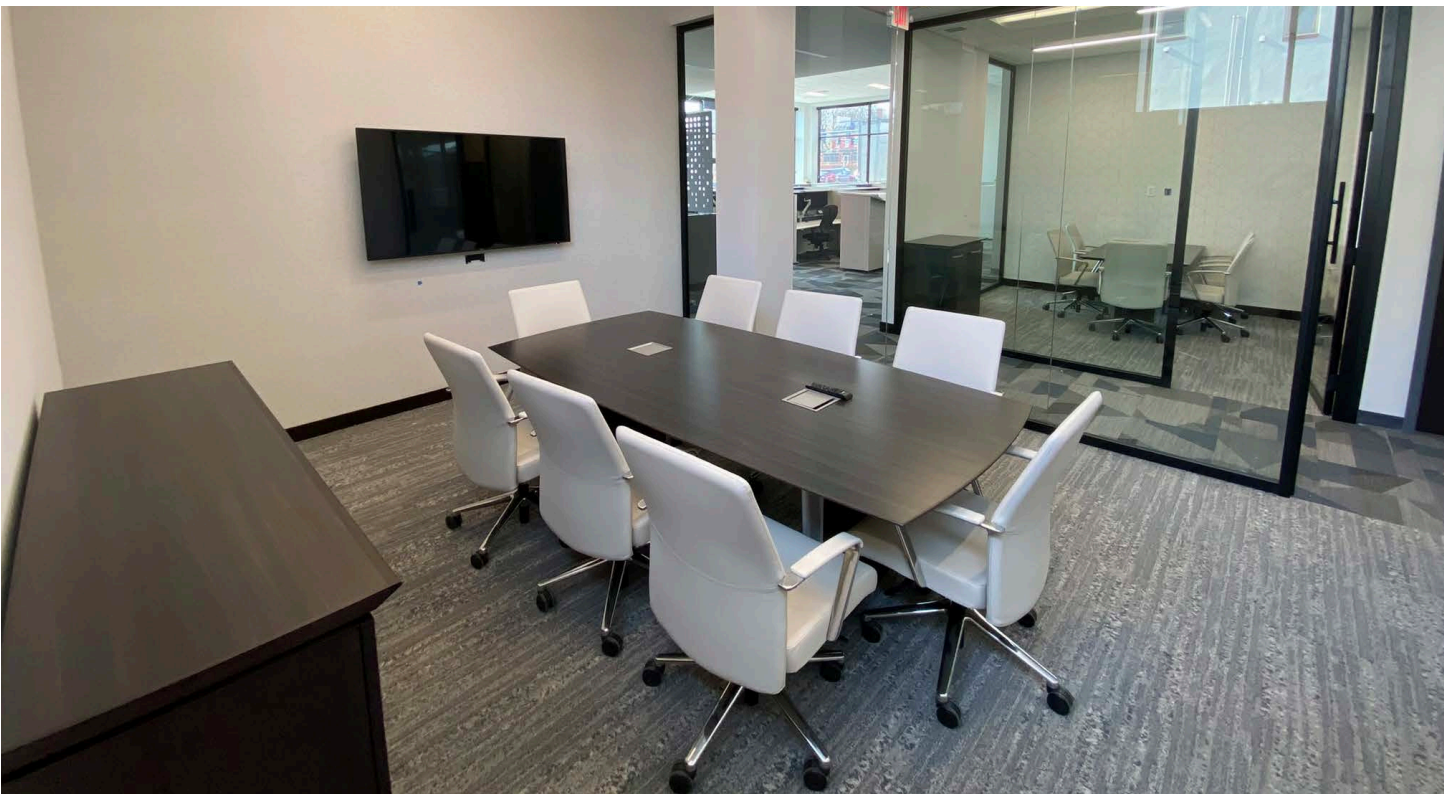
Welcome to a space where history meets innovation, where professionalism harmonizes with creativity—CLA's New Ulm office renovation. Brennan Companies is proud to present this project that showcases our commitment to excellence and transformative design.

Nestled in the heart of New Ulm, this project breathed new life into a historic building. The challenge was to blend the old with the new, persevering the building's rich heritage while creating a modern, functional workspace.

Teaming up with BDH Design and CliftonLarsonAllen (CLA) for a second time, Brennan Companies embarked on a journey to complete another fantastic office buildout. The visionary designs from BDH seamlessly integrated professionalism with bold colors, patterns, and branding, reflecting commitment to functionality and aesthetics. Every aspect of the renovation was carefully considered, down to the conference rooms inspired by local landmarks and nature. The historic preservation guidelines were meticulously followed, ensuring that the essence of the past was preserved. But no project is without its challenges. The discovery of asbestos required prompt remediation, handled efficiently to maintain safety and progress.

Brennan Companies success lies in the exceptional team and their ability to adapt. Regular meetings with subcontractors, owners, and architect fostered collaboration, problem-solving, and trust. Adjustments were made onsite to accommodate unforeseen conditions, demonstrating Brennan's commitment to consistency and excellence.

The CLA New Ulm office renovation is not just a project; it's a testament to what can be achieved when vision, expertise, and dedication come together. It stands as a benchmark in revitalizing spaces. Brennan Companies is honored to have been part of this transformative journey.



★ RESIDENTIAL

Category:	Over 5 Million
Company:	Hy-Tec Construction
Award:	PYRAMID
Project:	Red Willow Estates

In an effort to foster a resilient tribal economy and support tribal entrepreneurs, Mille Lacs Corporate Ventures (MLCV) set out to create an affordable workforce housing development. Red Willow Estates is a 12.85-acre residential development in Onamia, MN. The development includes fifteen duplex structures, consisting of a mix of three-bedroom and two-bedroom units. Also incorporated into the site design are several shared community amenities including, a basketball court, playground, community gardens and an outdoor gathering space with a pavilion, picnic tables, grills and a firepit. The development provides affordable housing options and amenities to the Mille Lacs Tribal workforce, of which more than 70 percent live outside the community and up to 60 percent commute up to 50 miles per day.

Hy-Tec Construction was continually challenged through the process of the development of the site. There were significant challenges due to the location of the property, including additional governmental regulation, review and permitting, and extensive soil corrections required to place infrastructure between wetlands. Our team worked closely with MLCV to provide value engineering options to make sure that the housing development remained within budget.

MLCV additionally received a Low-Income Housing Tax Credit award from the Minnesota Housing Finance Agency to construct the affordable housing development. This type of funding requires many pre-requisites and rigorous energy standards be incorporated into the housing. Hy-Tec Construction consulted with an independent HERS Rater to make sure all homes meet the criteria to achieve the EPA Energy Star Version 3.1 Certified Home designation.

Hy-Tec Construction is proud to be part of the successful collaboration and coordination of Red Willow Estates. This affordable, family-friendly neighborhood is a wonderful addition to the city of Onamia and the Mille Lacs Tribal community.



★ RESIDENTIAL - MULTI-FAMILY

Category:	Over 5 Million
Company:	Enclave Construction, LLC
Award:	PYRAMID
Project:	Kipling Apartments

Kipling Apartments was Enclave's first project in Brooklyn Park, MN, and sixth project in the Twin Cities metro. At over 200,000 square feet, the construction team broke ground on the 146-unit multifamily building in September 2021 and finished by February 2023, three months ahead of schedule.

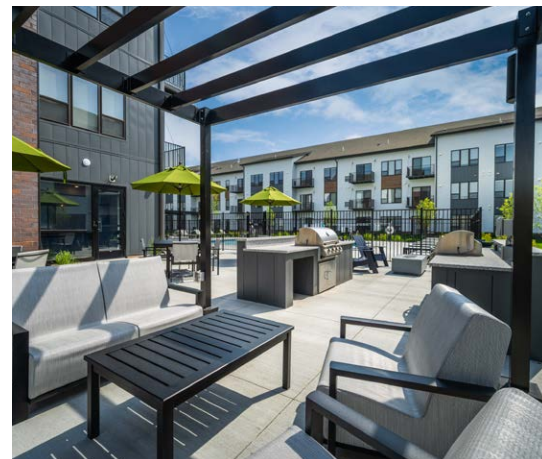
Enclave's team led the project, prioritizing clear communication and proactive planning. Due to post-pandemic material delays, the team carefully worked through plans to be as prepared as possible when construction started. To ensure material delays didn't impact the construction schedule, the crew stockpiled materials until they were needed, which resulted in an efficient construction timeline, putting the crew steps ahead before the project began.

Regardless of pre-planning, projects always have unexpected pieces, and this team pivoted without hesitation. Due to the unique layout of the building, the team had to carefully

plan the drainage system around Kipling's nearly enclosed courtyard, by adding downspout connections and connecting to the storm drain. Kipling was also the last site in a large, almost completed development, which required a lot of coordination from civil engineering to wrap up the project and halted primary access to the site.

Despite challenges, strategic decisions made by the team impacted the schedule positively. A project with no recordable accidents and zero missed days of work, the community consists of three levels of apartment homes over underground heated parking. Adding to the community's lifestyle-driven appeal, Kipling features a fitness and yoga studio, clubroom, sports simulator and private pool.

Through proactive planning and a solution-first approach, Enclave delivered a sought-after multifamily community to an underserved market, offering a new wave of living in Brooklyn Park.



★ RESIDENTIAL - MULTI-FAMILY

Category:	Over 5 Million
Company:	Stevens Construction Corp.
Award:	PYRAMID
Project:	The Townline

The Townline apartments in Minnetonka, MN are located ten miles west of Minneapolis, and provide Minnetonka's residents with high-quality housing in the revitalized Opus Park neighborhood. The property rests near a wooded area and one of the city's many revered and well-used bike and pedestrian trails, providing residents quick access to nearby businesses. It is also positioned near the Opus Parkway and the soon-to-be operating METRO Green Line light rail transit (LTR) for easy access to surrounding areas.

The Townline is a 261,370 square foot, five-story, multifamily apartment building with one level of underground parking. It features 223 units spread across a North and South wing. The wings are connected along the East to form a horseshoe-shaped building that surrounds a surface parking lot. The building is constructed of hollow core precast with wood framing. Its façade is crafted with brick, metal panel and fiber-cement siding to offer depth and separation in style across the large structure.

The amenity-rich building sits in stark contrast to the outdated, five-story office building that was demolished before construction could begin. The Townline includes seven beautifully designed and executed common areas on the first, second and fifth floors, as well as poolside common areas. The fifth-floor club room provides direct access to the rooftop terrace with shaded and non-shaded seating and grilling areas. The 55-person pool has poolside amenities including a sheltered area that uses the floor of the second level to serve as a roof over a dining area with a grill and 12-person table.

As the Opus Park neighborhood steadily grows, The Townline addition greatly enhances the growing residential neighborhood with its high-quality, welcoming apartments.



★ RESIDENTIAL - MULTI-FAMILY

Category:	Over 5 Million
Company:	Lyon Contracting, Inc.
Award:	EAGLE
Project:	Quest Apartments

Quest Apartments is a 134-unit, market-rate community developed by Trident Development and opened July 2023 at 13650 Marsh View Boulevard in Rogers. There were multiple innovative design ideas integrated into Quest. The Ownership group had a vision for the main entry to be a modern “central hub” which allows the residents to meet with friends and family, get some work done, or simply relax. To accomplish this, we worked together to come up with a concept that incorporated two patios off the front entry that flow effortlessly with the community room, the entry lobby, the mailroom, and the leasing offices. Through the design team and Lyon’s collaboration we came up with the idea to incorporate wood slat “living walls” into the privacy walls that surrounded the patio. Pairing these slat walls with black railings, stonework, and custom stained concrete walls we were able to achieve the start of the clean but modern look the owners desired. This along with the custom-colored pergolas, overhead patio lighting, putting green and the custom patio furnishing really showed off the front entrance. Just to the right of the front entry is a community room with a custom kitchenette lit up with LED soffits that incorporates a contemporary sliding aluminum pass through window at bar height with a granite top to tie it to one of the patio areas. The community room has a backlit TV wall, multiple seating areas and a two-sided fireplace that ties into the main entry lobby. To the left of the entry lobby are the leasing offices, mailroom with a coffee bar, and high-top seating.

Quest Apartments delivers unmatched style, design, and luxurious sophistication, all in what is one of the most desirable locations in Rogers. Being located within easy walking distance of multiple restaurants, shopping, and entertainment establishments understandably enhances the amenities of Quest Apartments that were thoughtfully incorporated to provide a unique standard of comfort and livability.



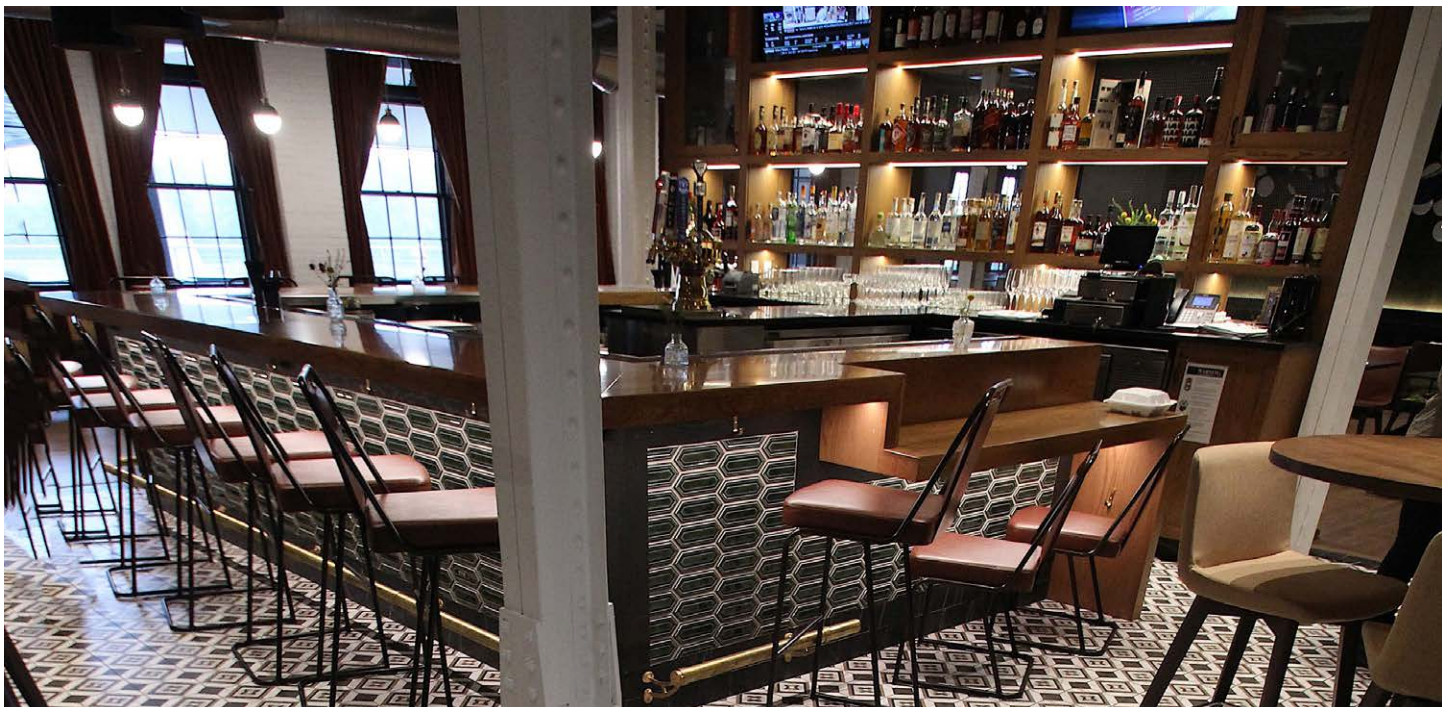
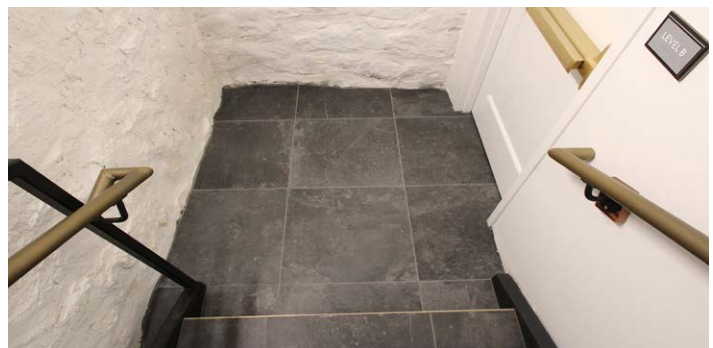
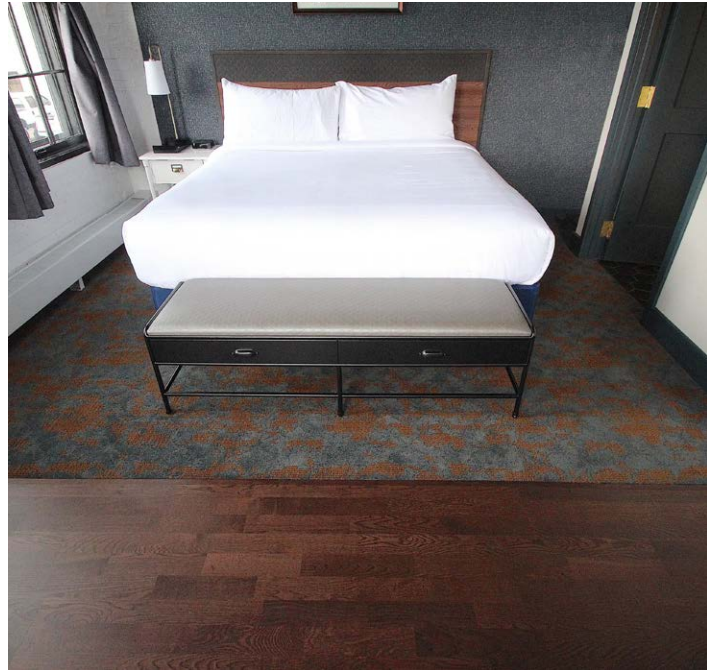
★ SPECIALTY CONTRACTING - INTERIORS

Category:	Over 1 Million
Company:	Grazzini Brothers & Company
Award:	EAGLE
Project:	The Confluence Hotel

Built in 1909, H.D. Hudson Manufacturing Company Factory has taken on a new life as The Confluence Hotel. This \$30 million, 100,000 square foot renovated building including apartments, a boutique hotel, restaurant, bar, event space and commercial retail space in Hastings, Minnesota, and creates a destination along the Mississippi River, just minutes away from the Twin Cities.

Grazzini Brothers' crews installed 24,156 square feet of ceramic, porcelain, and quarry floor & wall tile in 14 different tile types while our stone crews fabricated and installed 1,782 square feet of quartz and quartzite countertops along with stone inserts at the reception desk back wall. Carpet crews installed 46,254 square feet of carpet, resilient, and vinyl cove base.

Due to the COVID-19 pandemic, this project had multiple delays and revisions. Grazzini worked on multiple budget revisions for over 3 years before being awarded this project. Once awarded this project, there were multiple challenges. Being that the project was an existing historic building, the substrates for which our materials were installed over were not always flat and level. We worked with the contractor and other trades to correct any out-of-tolerance substrates so we could provide the owner with a final finished product as envisioned. Another challenge was that some of the tile work had to be custom scribed around the existing historical steel beams and existing rough irregular stone walls that were remaining exposed to showcase the history of the building. An additional challenge was hoisting the full rolls of carpet through a historic window opening to the 2nd floor event space. Also due to the epidemic, there were labor shortages by other trades ahead of us on the construction path. This put the project behind schedule. Grazzini Brothers' crews worked long hours and weekends to meet the schedule requirements.



Congratulations to all J-Berd partners on your award-winning Excellence in Construction projects!



sfsprinkler.com



j-berd.com



berdelectric.com

Form and Function



Stylish Flooring
with the Latest
Technologies
Commercial &
Residential
Over 45 Years
of Industry
Experience



Proud to partner
with Mohawk, Shaw,
Mannington, Tarkett

26 1st Ave N., Waite Park
320-253-5078
mcicarpetonewaitepark.com

HERE
TO
FLOOR
YOU™



Mon-Fri 8 a.m. - 7 p.m. Sat 9 a.m. - 4 p.m. Sun Closed

Locations in Waite Park, Baxter, Mankato, Champlin & Sioux Falls, SD CT-SPAD0103061401

As Responsive as You Need Your Labor and
Employment Law Firm to Be.



The Lawyers for Employers

Large Firm expertise. Small firm service, value and efficiency.

At Peters, Revnew, Kappenman & Anderson, P.A., we understand that our clients need to stretch their legal budgets as far as possible while still achieving their business goals. Unlike some of our competitors, we ensure that our clients receive the right level of service to achieve the desired result. No more. No less. We provide the best value for the legal dollar in the Upper Midwest.

To get Peters, Revnew, Kappenman & Anderson, P.A. working for you, **contact Martin Kappenman** at mkappenman@prkalaw.com or 952-921-4603 or visit us at www.prkalaw.com.

- ◆ Initial call free to ABC members
- ◆ Employee Handbook and Employment Materials Package \$1,075
- ◆ Drug & Alcohol Testing Package \$525

Peters, Revnew, Kappenman & Anderson P.A.
7300 Metro Blvd., Suite 500
Minneapolis, MN 55439

REPRESENTING EMPLOYERS IS WHAT WE DO. WWW.PRKALAW.COM

INNOVATED *SERVICES* LLC

CONSTRUCTION SERVICES • LIGHT COMMERCIAL SPECIALISTS

Innovated Services LLC
8220 West 125th Street, Savage, MN 55378
Office: 952-882-0002 • Fax: 952-882-0003

www.innovatedservices.net

ABC creates invaluable opportunities for members to **CONNECT**

ABC is dedicated to helping our members—self-made men and women—build and sustain strong business relationships. The association cultivates members who are job creators, drawn to ABC for the opportunity to connect.

Count on ABC to spark the best connections.

ABC—Helping members win work and deliver work safely, ethically and profitably for the betterment of the communities in which they work.

TOUGH. TRUSTED. CONNECTED.

Visit mnabc.com or ndabc.com to learn more.

